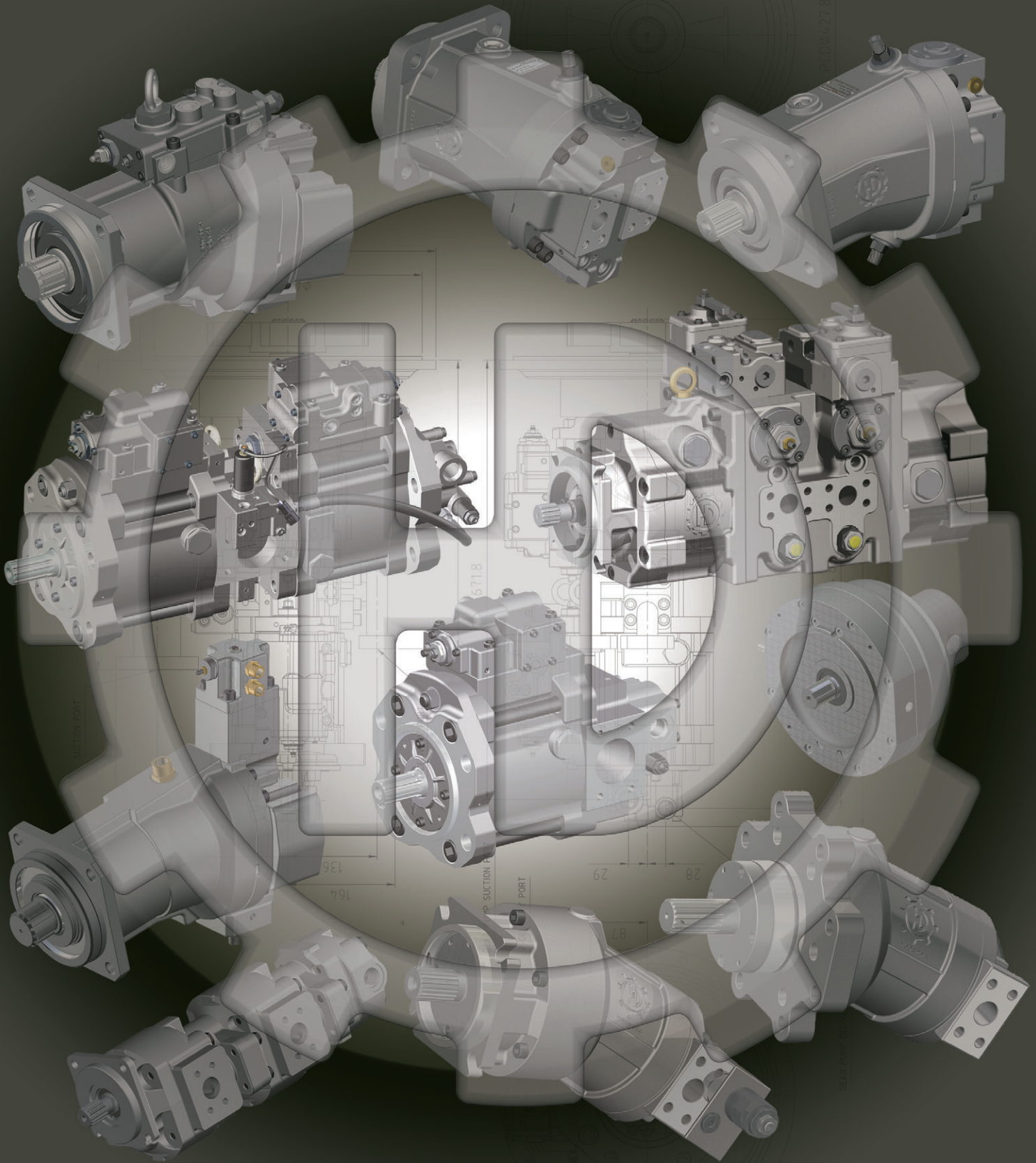


HYDRAULIC PUMPS AND MOTORS FOR CONSTRUCTION HEAVY EQUIPMENTS, MARINE AND INDUSTRY

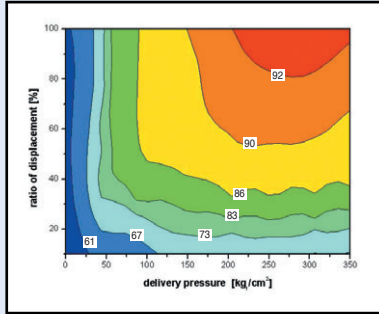


HANDOK HYDRAULIC CO.
韓獨油壓

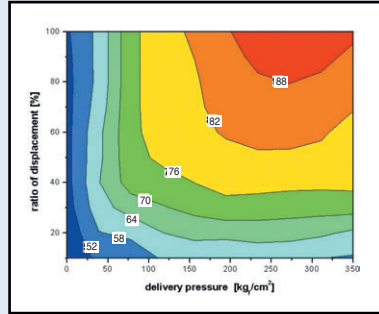


PERFORMANCE CURVE FOR SWASH PLATE & BENT AXIS TYPE PISTON PUMPS (摇摆盘式及弯轴式柱塞泵性能曲线)

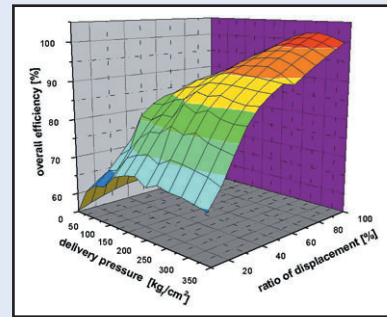
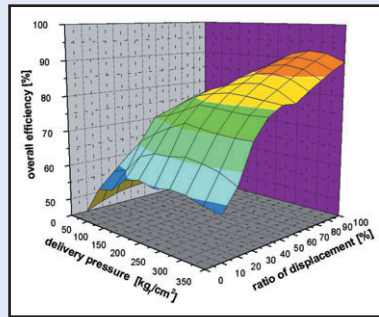
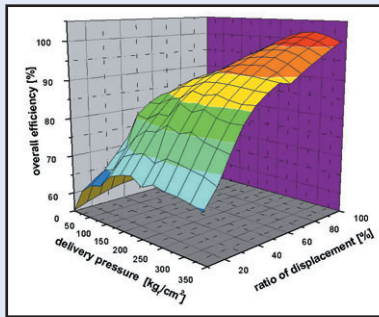
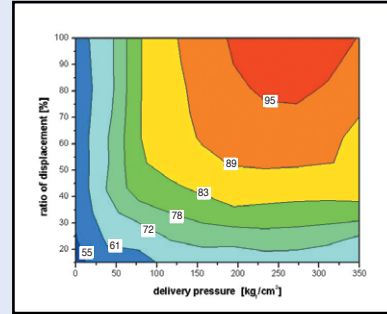
H3V63/112



H3V140/180



HPV116/145



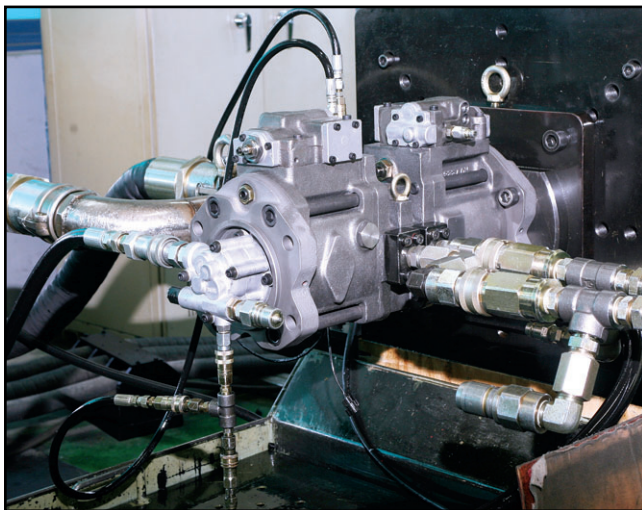
Max. Speed (转速) : 2,500rpm

Suction Pressure (吸油 压力) : 0~1kg/cm²(bar)

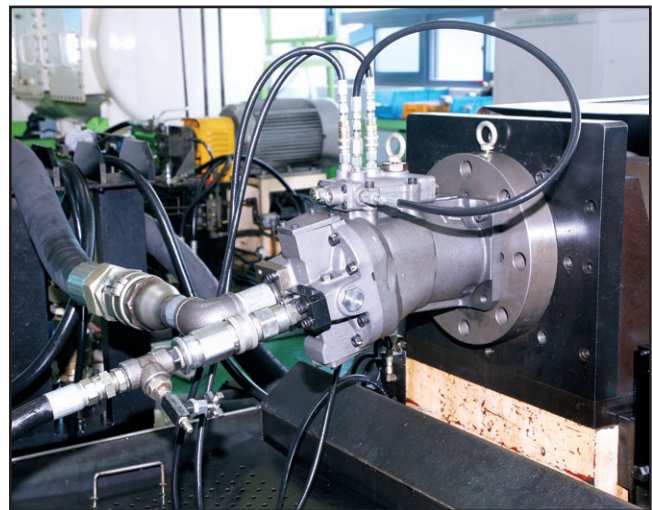
Oil Temperature (油温) : 50 °C Oil Viscosity (油粘度) : 32mm²/s (cSt)

● SWASH PLATE TYPE PISTON PUMPS (摇摆盘式柱塞泵)

● BENT AXIS TYPE PISTON PUMPS (弯轴式柱塞泵)

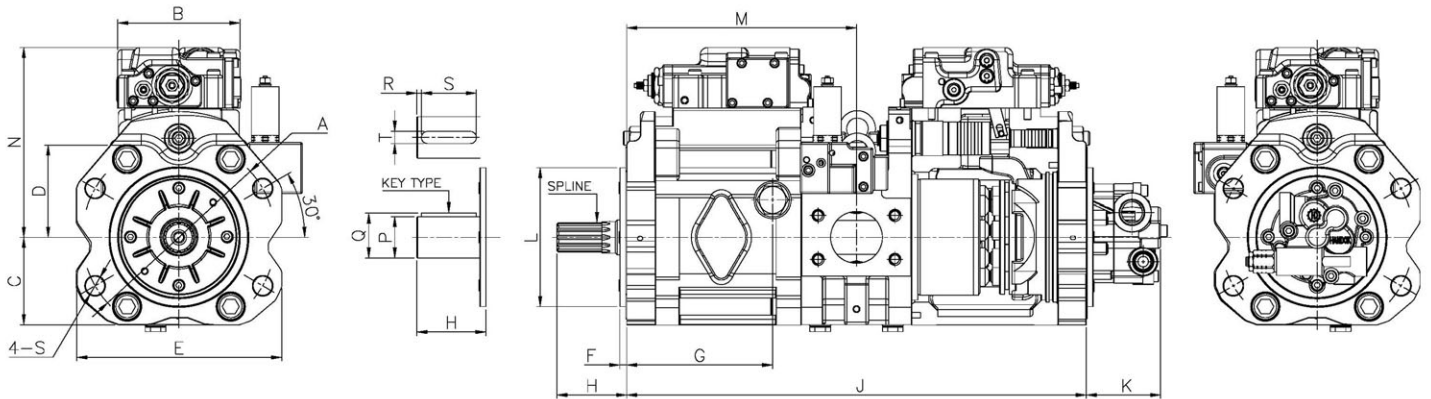


H3V PUMP SERIES (63/112/140/180/280)
(H3V 型系列泵)



HPV 116/145 PUMP SERIES
(HPV 116/145 型系列泵)

H3V SERIES, SWASH PLATE TYPE DOUBLE PISTON PUMPS (H3V 系列, 摇摆盘式双联柱塞泵)

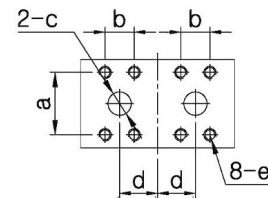
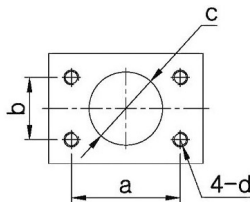


H3V SERIES DOUBLE AXIAL TYPE PISTON PUMPS SPECIFICATIONS (H3V 系列双轴柱塞泵规格参数)

MODEL (型号)	POD ϕ A	B	C	D	E	F	G	H	J	K	L	M	N	S	P	Q	R	S	T	WEIGHT (重量)	
H3V63	$\phi 180$	140	89	98	190	8	138	76	465	101	$\phi 125$	228	195	$\phi 18$	N/A					100kg	
H3V112	$\phi 224$		100	110	234		167	78	530		$\phi 160$	265	220	$\phi 22$						126kg	
H3V140&180	$\phi 250$	140	112	123	256	8	190	93	610	104	$\phi 180$	305	245	$\phi 22$	$\phi 60$	64	5	95	18	160kg	
H3V180 DT (KOBELCO TYPE)								180												295	175kg
H3V180 DTH								93												648	175kg
H3V280	$\phi 300$	127	140	300	9	203	115	748	105	$\phi 200$	374	286	$\phi 26$	$\phi 70$	74.5			20	320kg		

SPLINE SPECIFICATIONS (花键参数)

MODEL (型号)	No. of teeth (齿数)	Pitch Circle Dia. (mm) (定位圆直径)	Module (模数)	Pressure Angle (压力角)	Standard
H3V63	14	29.633	12/24	30°	ANSI B92.1b:1970
H3V112	12	30	2.5	20°	JIS B 1603 : 1995
	14	35			
H3V140&180/180 DTH	14	35	2.5	20°	
	17	42.5			
H3V180 (KOBELCO TYPE)	14	42	3.0	20°	
H3V280	22	66	3.0	30°	DIN5480:1991



FLANGE MOUNTING FACE FOR SUCTION PORT (吸油口规格参数)

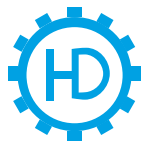
(mm)

MODEL (型号)	a	b	c	d
H3V63	88.9	50.8	$\phi 60$	M12X1.75P Dp18
H3V112				
H3V140&180	106.4	61.9	$\phi 76$	M16X2.0P Dp24
H3V280	130.2	77.8	$\phi 102$	M16X2.0P Dp24

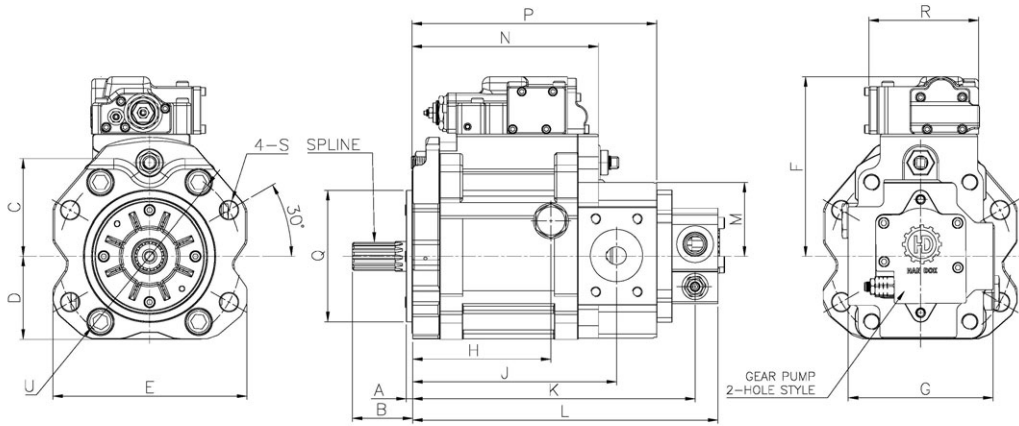
FLANGE MOUNTING FACE FOR DELIVERY PORT (出油口规格参数)

(mm)

MODEL (型号)	a	b	c	d	e
H3V63	50.8	23.8	$\phi 19$	31	M10X1.5P Dp16
H3V112					M10X1.5P Dp23
H3V140&180	57.2	27.8	$\phi 25$	37.5	M12X1.75P Dp23
H3V280	79.6	36.6	$\phi 38$	98	M16X2P Dp25



H3V/H5V SERIES, SWASH PLATE TYPE SINGLE PISTON PUMPS (H3V/H5V 系列, 搖擺盤式单体柱塞泵)



※USABLE CIRCUMSTANCE (应用环境)
50°C, ISO VG46, -20~90°C

MODEL (型号)	H3V63S	H5V80S	H3V112S	H3V140(180)S	H5V200S	H3V280S
Discharge Rate (cc/rev) (排量)	63	80	112	140(180)	200	280
Max. Pressure (kg/cm ²) (设定压力)	350					
Max. Speed (转速) (rpm)	2650	2460	2360	2150	1900	1600

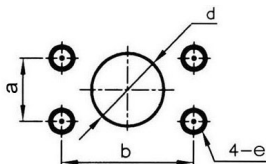
H3V SERIES SINGLE AXIAL PISTON PUMPS SPECIFICATIONS (H3V 系列单轴柱塞泵规格参数)

(mm)

MODEL (型号)	A	B	C	D	E	F	G	H	J	K	L	M	N	P	Q	R	S	U
H3V63S/H5V80S	8	76	98	89	190	195	140	138	210	295	330	80	196	255	∅125	140	∅18	∅180
H3V112S/H5V140S		78	110	100	234	220	160	167	249	338	373	92	229	298	∅160		∅22	∅224
H3V140S/180S/ H5V200S		93	123	112	256	245	182	190	287	383	418	111	260	343	∅180		∅250	
H3V280S	9	115	140	127	300	286	249	203	349	349	484	135	322	409	∅200	∅26	∅300	

SPLINE SPECIFICATIONS (花键参数)

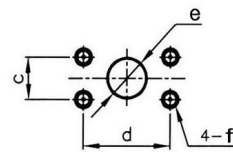
MODEL (型号)	No. of teeth (齿数)	Pitch Circle Dia(mm) (定位圆直径)	Module (模数)	Pressure Angle (压力角)
H3V63S/H5V80S	14	29.6	12/24	30°
H3V112S/H5V140S	14	35	2.5	20°
H3V140(180)S/H5V200S	17	42.5	2.5	20°
H3V280S	22	66	3.0	30°



FLANGE MOUNTING FACE FOR SUCTION PORT
(吸油口规格参数)

(mm)

MODEL (型号)	a	b	∅d	4-Me-Dp
H3V63S/H5V80S	35.7	69.9	∅38	M12X1.75P Dp18
H3V112S/H5V140S	50.8	88.9	∅64	M12X1.75P Dp24
H3V140(180)S/ H5V200S	61.9	106.4	∅76	M16X2.0P Dp24
H3V280S	69.9	120.7	∅89	M16X2.0P Dp24

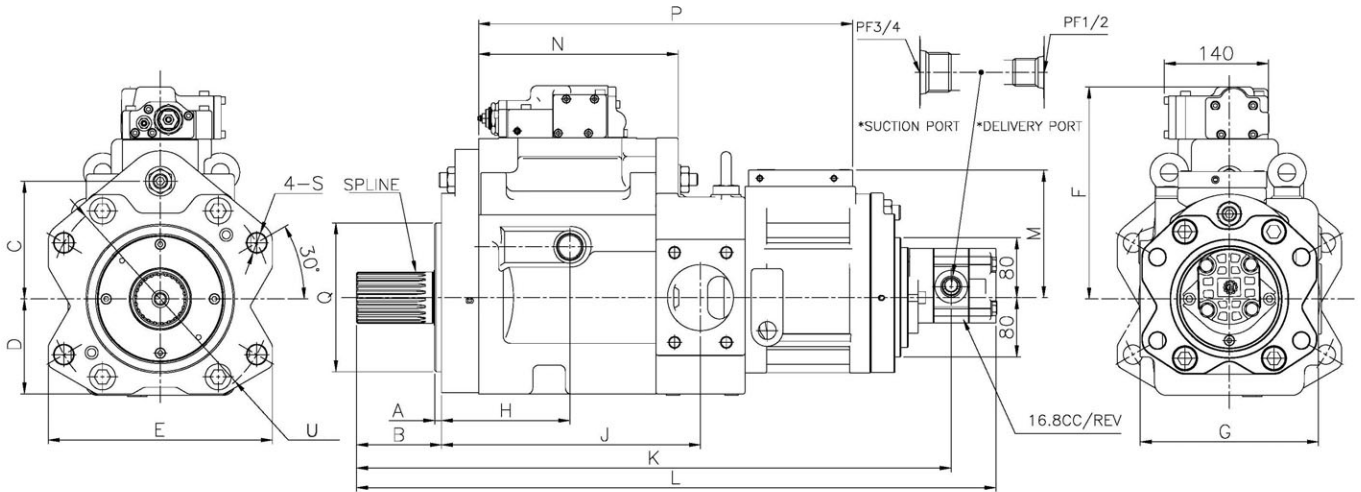


FLANGE MOUNTING FACE FOR DELIVERY PORT
(出油口规格参数)

(mm)

MODEL (型号)	a	b	∅d	4-Me-Dp
H3V63S/H5V80S	27.8	57.2	∅25	M10X1.5P Dp17
H3V112S/H5V140S	31.8	86.7	∅32	M12X1.75P Dp24
H3V140(180)S/ H5V200S	36.5	79.4	∅38	M16X2.0P Dp24
H3V280S	36.5	79.4	∅38	M16X2.0P Dp24

H3V280.112RS-FI SWASH PLATE TYPE PISTON PUMP (H3V280.112RS-FI 摇摆盘式双联柱塞泵)



H3V280.112RS-FI AXIAL PISTON PUMPS SPECIFICATIONS (H3V280.112RS-FI 轴柱塞泵规格参数)

(mm)

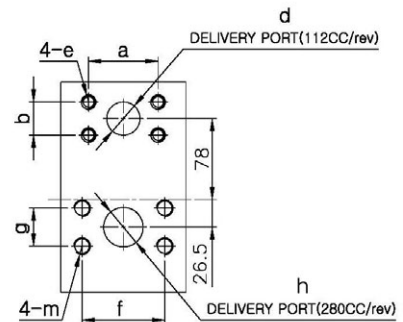
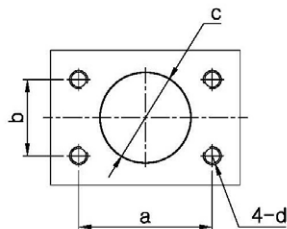
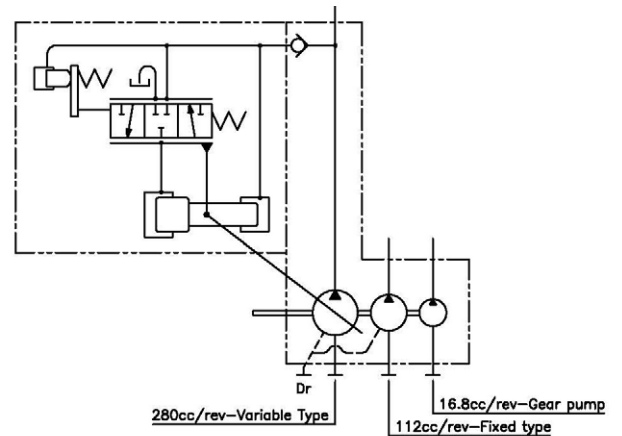
MODEL (型号)	A	B	C	D	E	F	G	H	J	K	L	M	N	P	Q	S	U
H3V280.112RS-FI	9	115	140	128	302	237	240	173	349	678.3	849.4	169.1	269	508	∅200	∅26	∅300

SPLINE SPECIFICATION (花键参数)

MODEL (型号)	No. of teeth (齿数)	Pitch circle dia(mm) (定位圆直径)	Module (模数)	Pressure angle (压力角)
H3V280.112RS-FI	22	66	3.0	30°

※USABLE CIRCUMSTANCE (应用环境)
50°C, ISO VG46, -20~90°C

MODEL (型号)	FRONT	REAR	CHARGE PUMP
Discharge Rate (cc/rev) (排量)	280	112	16.8
Max. Pressure (kg/cm ²) (设定压力)	350		210
Max. Speed (转速) (rpm)	1600		



MOUNTING FLANGE FACE FOR SUCTION PORT (吸油口规格参数)

(mm)

MODEL (型号)	a	b	c	d
H3V280RS 112RS-FI	69.9	120.7	∅89	M16X20P Dp24

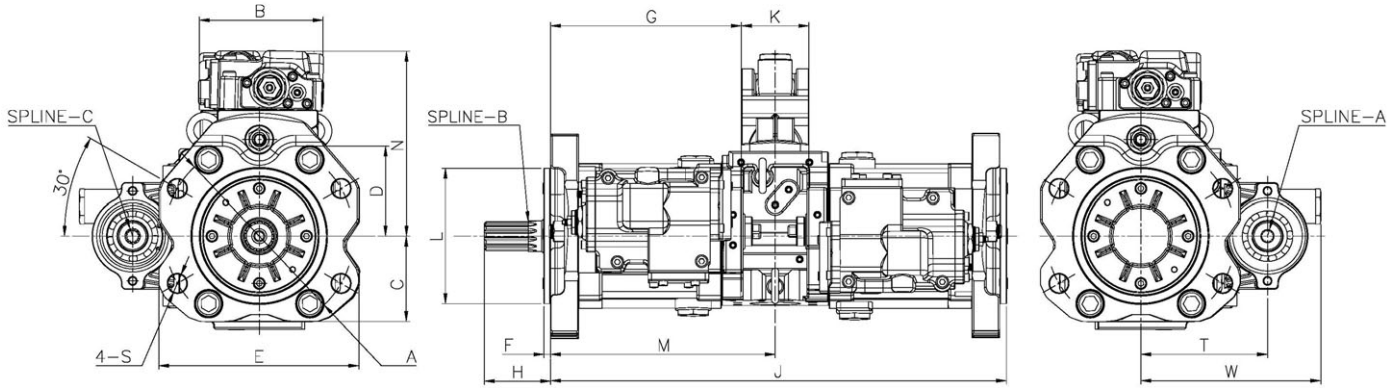
FLANGE MOUNTING FACE FOR DELIVERY PORT (出油口规格参数)

(mm)

MODEL (型号)	a	b	d	e	f	g	h	m
H3V280RS 112RS-FI	66.7	31.8	∅32	M12X1.75P Dp24	79.4	36.5	∅38	M16X2.0P Dp24



H3V/H5V DTP SERIES, SWASH PLATE TYPE DOUBLE PISTON PUMPS (H3V/H5V DTP系列, 摇摆盘式双联柱塞泵)



H3V/H5V DTP SERIES DOUBLE AXIAL TYPE PISTON PUMPS SPECIFICATIONS

(H3V/H5V DTP系列双轴柱塞泵规格参数)

(mm)

MODEL (型号)	A	B	C	D	E	F	G	H	J	K	L	M	N	S	T	W	WEIGHT
H3V63DTP/H5V80DTP	∅180	140	89	98	190	8	177	76	464	91	∅125	228	195	∅18	150	213	103kg
H3V112DTP/H5V140DTP	∅224	140	100	110	234	8	214	78	538	91	∅160	265	220	∅22	150	213	129kg
H3V140/180DTP/H5V200DTP	∅250	140	112	123	256	8	257	93	618	104	∅180	305	245	∅22	201	292	334kg

SPLINE-A SPECIFICATIONS (花键参数)

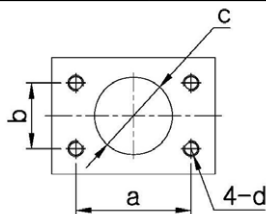
MODEL (型号)	No. of teeth (齿数)	Pitch Circle Dia(mm) (定位圆直径)	Module (模数)	Pressure Angle (压力角)	Standard
H3V63/H5V80 DTP/ H3V112/H5V140 DTP	10	15.8	16/32	30°	ANSI B92.1b:1970
H3V140/180DTP/H5V200DTP	13	13	1.0	20°	JIS B 1603:1995

SPLINE-B SPECIFICATIONS (花键参数)

MODEL (型号)	No. of teeth (齿数)	Pitch Circle Dia(mm) (定位圆直径)	Module (模数)	Pressure Angle (压力角)	Standard
H3V63 DTP	14	29.6	12/24	30°	ANSI B92.1b:1970
H3V112 DTP	14	35.0	2.5	20°	JIS B 1603:1995
H3V140/180 DTP	17	42.5	2.5		
H5V80 DTP	12	30	2.5		
H5V140 DTP	17	42.5	2.5		
H5V200 DTP	17	42.5	2.5		

SPLINE-C SPECIFICATIONS (花键参数)

MODEL (型号)	No. of teeth (齿数)	Pitch Circle Dia(mm) (定位圆直径)	Module (模数)	Pressure Angle (压力角)	Standard
H3V63DTP/H5V80 DTP H3V112DTP/H5V140 DTP	13	13	1.0	20°	JIS B 1603:1995
H3V140/180DTP/H5V200DTP	13	19.5	1.5	20°	JIS B 1603:1995

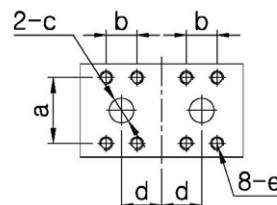


FLANGE MOUNTING FACE FOR SUCTION PORT

(吸油口规格参数)

(mm)

MODEL (型号)	a	b	c	d4-Me-Dp
H3V63/H5V80 DTP	88.9	50.8	∅60	M12X1.75P Dp18
H3V112/H5V140 DTP				
H3V140/180 DTP H5V200 DTP	106.4	61.9	∅76	M15X2.0P Dp24



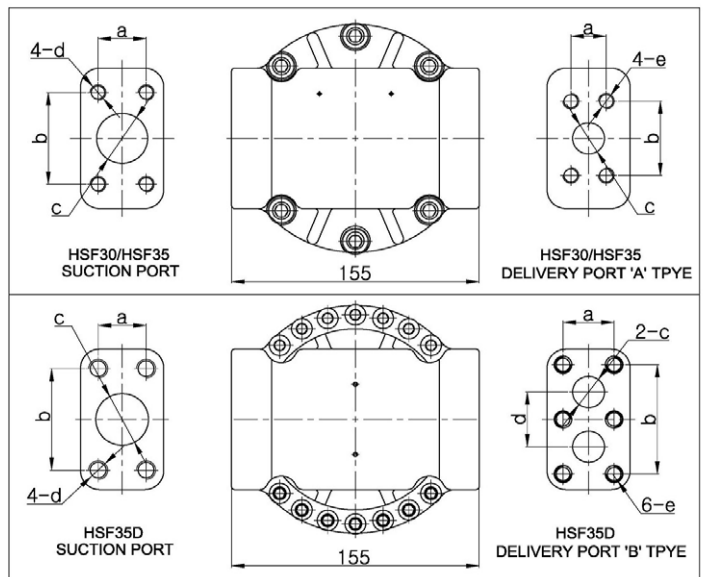
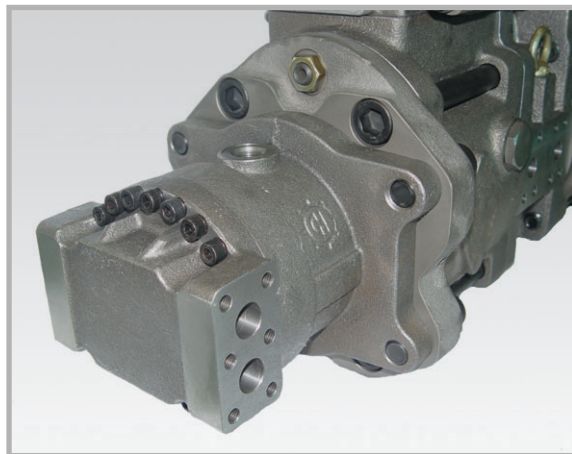
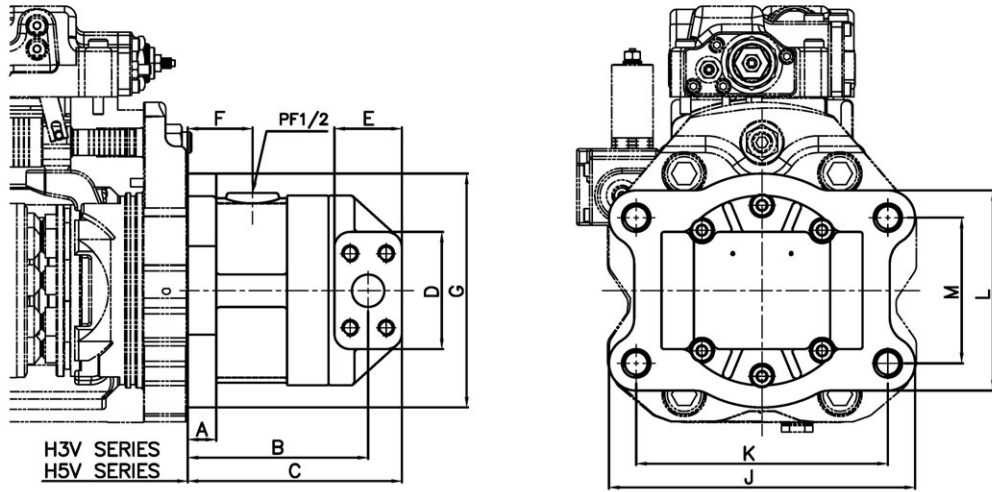
FLANGE MOUNTING FACE FOR DELIVERY PORT

(出油口规格参数)

(mm)

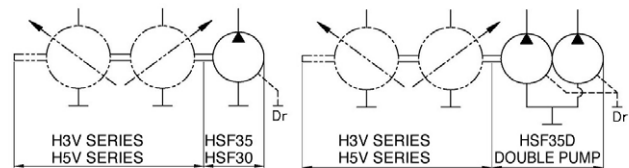
MODEL (型号)	a	b	c	d	e
H3V63/H5V80 DTP	50.8	23.8	∅19	28.2	M10X1.5P Dp16
H3V112/H5V140 DTP				31	
H3V140/180 DTP H5V200 DTP	57.2	27.8	∅25	4.2	M12X1.75P Dp23

HSF30/35/35D SWASH PLATE TYPE PISTON PUMPS (HSF30/35/35D, 摇摆盘式双联柱塞泵)



※USABLE CIRCUMSTANCE (应用环境)
50°C, ISO VG46, -20~90°C

MODEL (型号)	HSF30	HSF35	HSF35D DOUBLE PUMP
Discharge Rate (cc/rev) (排量)	30	35	35X2
Max. Pressure (kg/cm ²) (设定压力)	320	320	320
Max. Speed (转速) (rpm)	2650	2360	2650



HSF30/35/35D AXIAL TYPE PISTON PUMPS SPECIFICATIONS (HSF30/35/35D 双轴柱塞泵规格参数)

(mm)

MODEL (型号)	A	B	C	D	E	F	G	J	K	L	M
HSF30	22	138.6	164.6	90	52	50	180	236	194	154	112
HSF35											
HSF35D											

FLANGE MOUNTING FACE FOR SUCTION PORT (吸油口规格参数)

(mm)

MODEL (型号)	a	b	c	d
HSF30	30.2	58.7	ø32	M10X1.5P Dp20
HSF35				
HSF35D	30	65	ø33	M12X1.75P Dp20

FLANGE MOUNTING FACE FOR DELIVERY PORT (出油口规格参数)

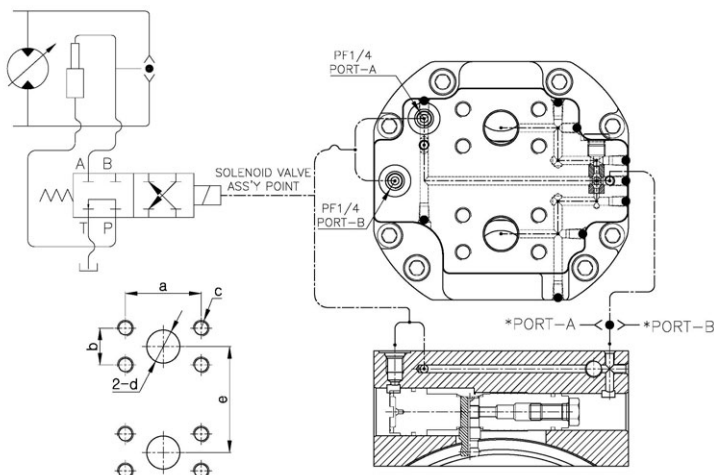
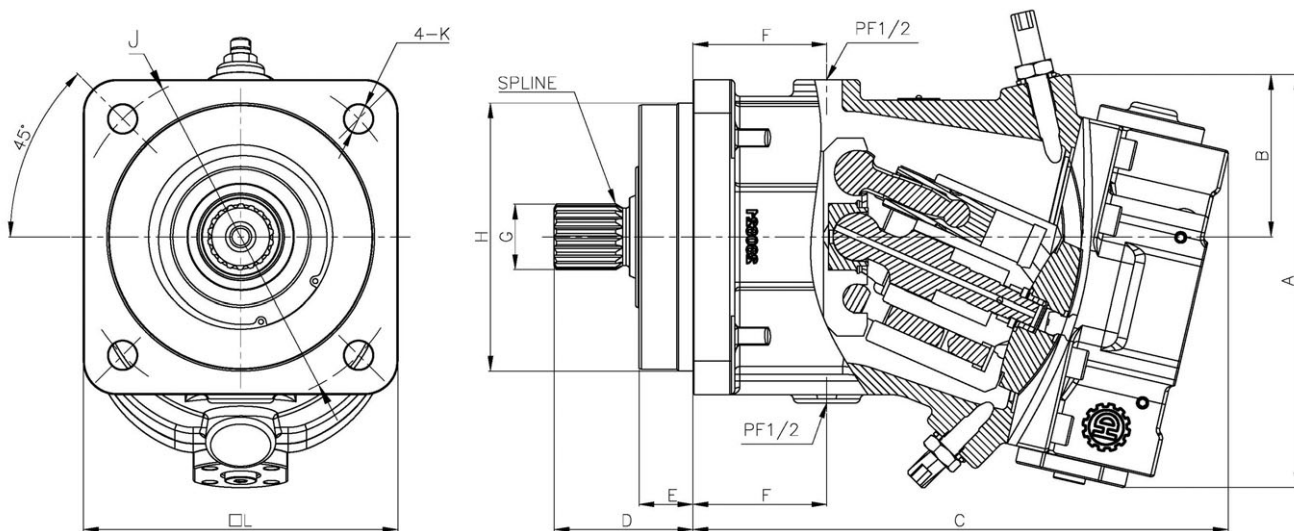
(mm)

MODEL (型号)	a	b	c	d	e	TYPE
HSF30	50.8	23.8	ø19	-	M10X1.5P Dp20	A
HSF35						B
HSF35D	32	70	ø20	35		



H6V55M/80M/107M/160M BENT AXIS TYPE DISPLACEMENT VARIABLE AXIAL PISTON MOTOR (H6V55M/80M/107M/160M 弯轴式柱塞马达)

PISTON SWAGING TYPE



※USABLE CIRCUMSTANCE (应用环境)
50°C, ISO VG46, -20~90°C

FLANGE MOUNTING FACE
FOR SUCTION&DELIVERY PORT(出/吸油口规格参数)

MODEL (型号)	a	b	c	d	e
H6V55M	50.8	23.8	M10×1.5P Dp20	19	75
H6V80M	57.2	27.8	M12×1.75P Dp20	25	80
H6V107M	57.2	27.8	M12×1.75P Dp20	25	80
H6V160M	66.7	31.8	M14×2.0P Dp20	35	152

MODEL (型号)	DISPLACEMENT (cc/rev)		NORMAL PRESSURE (kg/cm ²)	TORQUE (Nm)	R.P.M		FLOW MAX (L/min)
	MAX	MIN			MAX	MIN	
H6V55M	55	35	350	300	4,450	7,000	244
H6V80M	80	51		437	3,900	6,150	312
H6V107M	107	70		629	3,500	5,750	403
H6V160M	160	101		874	3,100	4,900	496

SPLINE SPECIFICATION(花键参数)

MODEL (型号)	No. of teeth (齿数)	Pitch circle dia.(mm) (定位圆直径)	Module (模数)	Pressure angle (压力角)
H6V55M	14	28	2.0	30°
H6V80M	16	32	2.0	30°
H6V107M	18	36	2.0	30°
H6V160M	21	42	2.0	30°

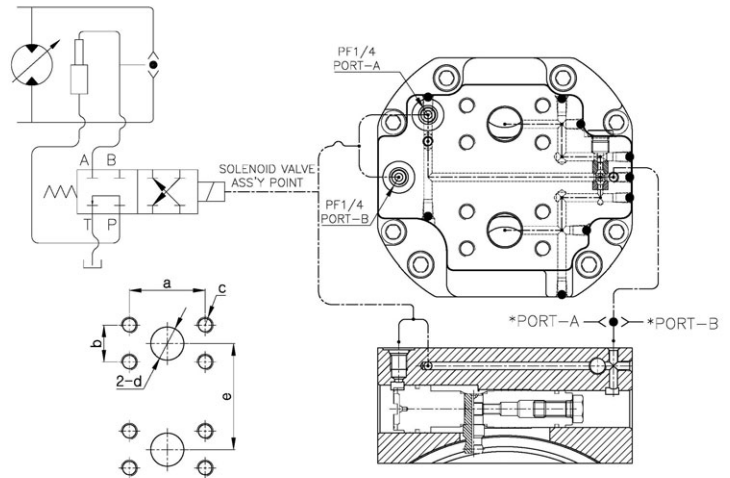
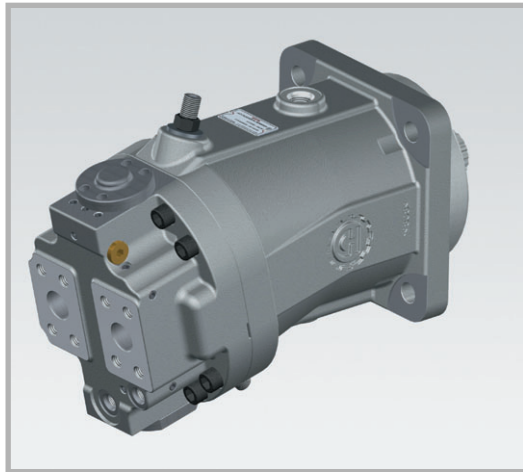
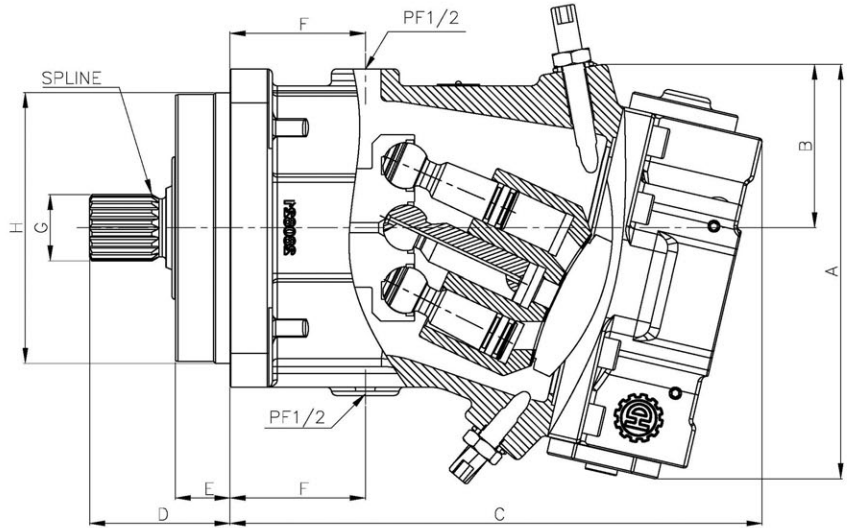
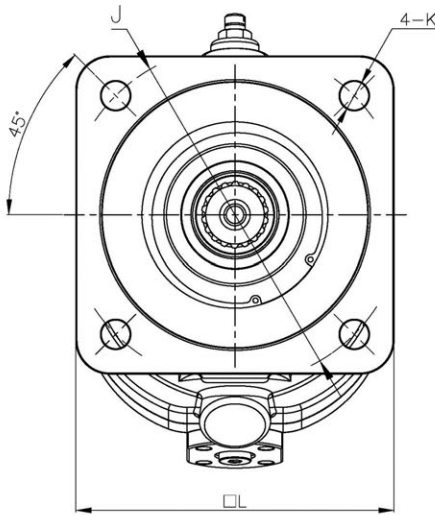
SPECIFICATIONS FOR H6V55M/80M/107M/160M (规格参数) (mm)

MODEL (型号)	A	B	C	D	E	F	G	H	J	K	L
H6V55M	225	90	280	65	25	67	∅80	∅125	∅160	∅13.5	150
H6V80M	240	95	300	72	25	75	∅85	∅140	∅180	∅13.5	165
H6V107M	255	100	320	83	32	80	∅89.5	∅160	∅200	∅17.5	190
H6V160M	292	107	360	90	32	92	∅45	∅180	∅224	∅17.5	210

H6VM55/80/107/160 BENT AXIS TYPE DISPLACEMENT VARIABLE AXIAL PISTON MOTOR (H6VM55/80/107/160弯轴式柱塞马达)



PISTON RING TYPE



※ USABLE CIRCUMSTANCE (应用环境)
50°C, ISO VG46, -20~90°C

FLANGE MOUNTING FACE FOR SUCTION&DELIVERY PORT(出/吸油口规格参数)

MODEL (型号)	a	b	c	d	e
H6VM55	50.8	23.8	M10 ×1.5P Dp20	19	75
H6VM80	57.2	27.8	M12 ×1.75P Dp20	25	80
H6VM107	57.2	27.8	M12 ×1.75P Dp20	25	80
H6VM160	66.7	31.8	M14 ×2.0P Dp20	35	152

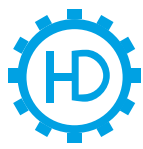
MODEL (型号)	DISPLACEMENT (cc / rev)		NORMAL PRESSURE (kg/cm ²)	TORQUE (Nm)	R.P.M		FLOW MAX (L / min)
	MAX	MIN			MAX	MIN	
H6VM55	55	35	350	300	4,450	7,000	244
H6VM80	80	51		437	3,900	6,150	312
H6VM107	107	70		629	3,500	5,750	403
H6VM160	160	101		874	3,100	4,900	496

SPLINE SPECIFICATION(花键参数)

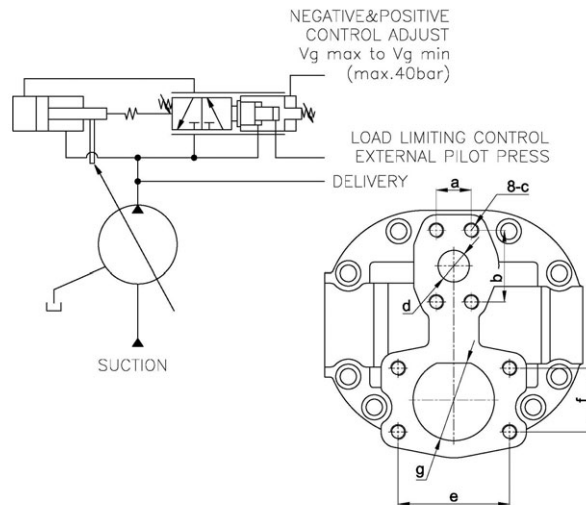
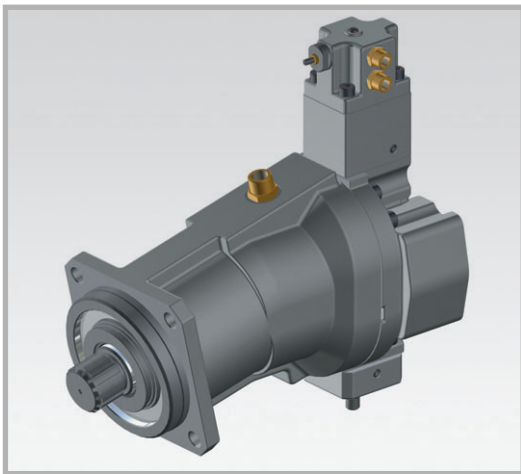
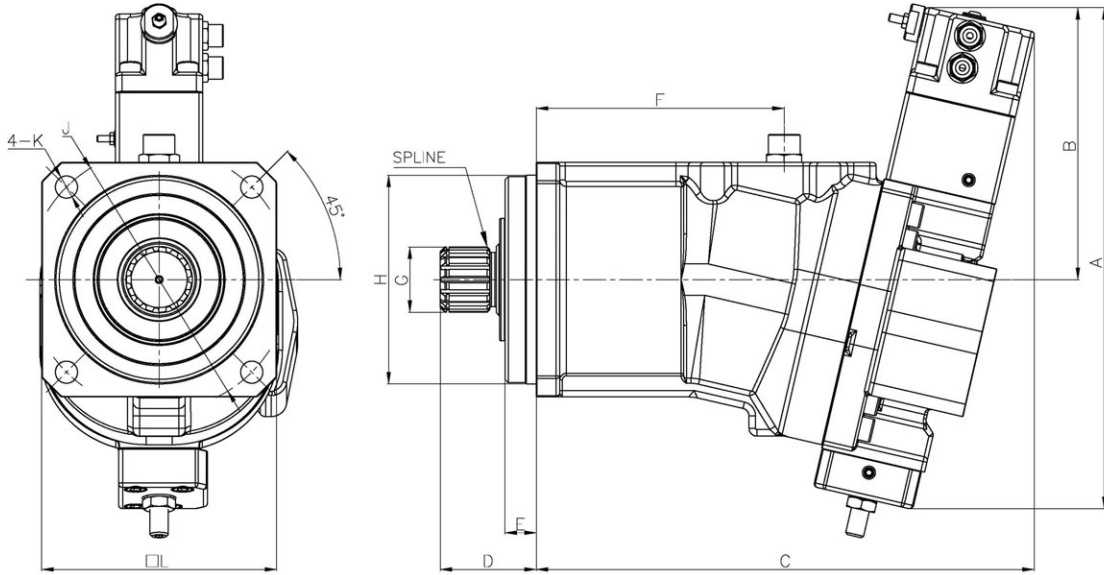
MODEL (型号)	No. of teeth (齿数)	Pitch circle dia(mm) (定位圆直径)	Module (模数)	Pressure angle (压力角)
H6VM55	14	28	2.0	30°
H6VM80	16	32	2.0	30°
H6VM107	18	36	2.0	30°
H6VM160	21	42	2.0	30°

SPECIFICATIONS FOR H6VM55/80/107/160 (规格参数)(mm)

MODEL (型号)	A	B	C	D	E	F	G	H	J	K	L
H6VM55	220	90	270	65	25	67	∅30	∅25	∅160	∅13.5	150
H6VM80	236	95	290	72	25	75	∅35	∅140	∅180	∅13.5	165
H6VM107	250	100	310	83	32	80	∅39.5	∅160	∅200	∅17.5	190
H6VM160	287	107	370	90	32	92	∅45	∅180	∅224	∅17.5	210



H7VO55/80/107/160/250 BENT AXIS TYPE DISPLACEMENT VARIABLE AXIAL PISTON MOTOR (H7VO55/80/107/160/250 弯轴式柱塞泵)



FLANGE MOUNTING FACE FOR SUCTION&DELIVERY PORT(出/吸油口规格参数)

MODEL (型号)	a	b	c	d	e	f	g
H7VO55	23.8	50.8	M12×1.75P Dp30	∅19	77.8	42.9	∅49
H7VO80	27.8	57.2	M12×1.75P Dp30	∅25	88.9	50.8	∅62
H7VO107	28	57	M12×1.75P Dp30	∅25	89	51	∅65
H7VO160	31.8	66.7	M16×2.0P Dp30	∅32	106.4	61.9	∅75
H7VO250	36	75	M15×2.0P Dp30	∅40	115	73	∅85

※USABLE CIRCUMSTANCE (应用环境)
50°C, ISO VG46, -20~90°C

MODEL (型号)	H7VO55/80/107/160/250
Discharge Rate (cc/rev) (排量)	55/80/107/160/250
Max. Pressure (kg/cm²) (设定压力)	350
Max. Speed (转速) (rpm)	3400/3000/2900/2560/2300

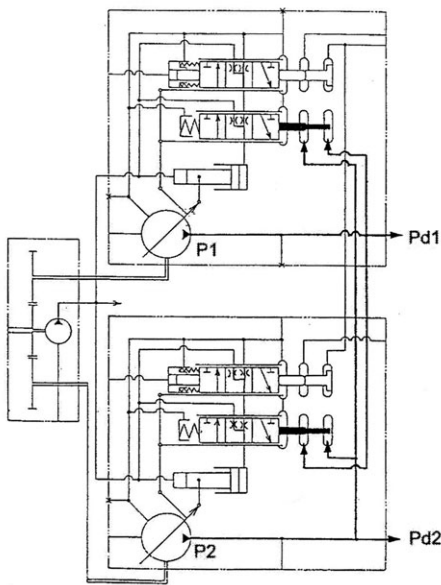
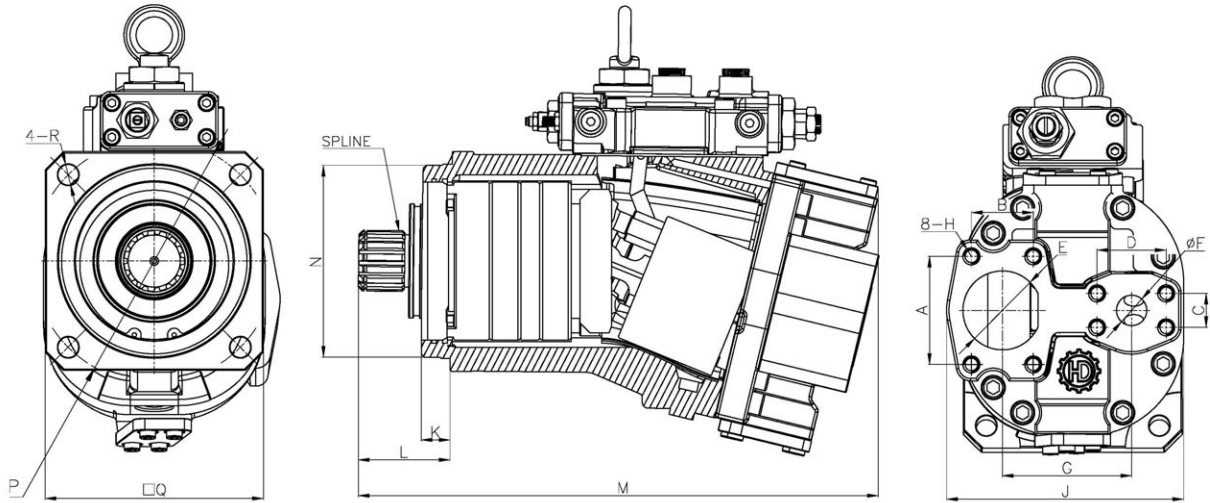
SPLINE SPECIFICATION(花键参数)

MODEL (型号)	No. of teeth (齿数)	Pitch circle dia.(mm) (定位圆直径)	Module (模数)	Pressure angle (压力角)
H7VO55	14	28	2.0	30°
H7VO80	16	32	2.0	30°
H7VO107	15	45	2.0	30°
H7VO160	21	42	2.0	30°
H7VO250	23	46	2.0	30°

SPECIFICATIONS FOR H7VO55/80/107/160/250 (规格参数) (mm)

MODEL (型号)	A	B	C	D	E	F	G	H	J	K	L
H7VO55	345	200	340	70	24	170	∅30	∅125	∅160	∅13.5	150
H7VO80	365	205	360	70	24	180	∅35	∅140	∅180	∅13.5	165
H7VO107	385	210	382	73.6	24	190	∅50	∅160	∅200	∅17	180
H7VO160	420	220	425	75	24	200	∅45	∅180	∅224	∅17	210
H7VO250	455	230	459	76.4	24	210	∅50	∅200	∅248	∅17	230

HPV116, HPV145 BENT AXIS TYPE AXIAL PISTON PUMPS (HPV116, HPV145 弯轴式柱塞泵)



※USABLE CIRCUMSTANCE (应用环境)
50°C, ISO VG46, -20~90°C

MODEL (型号)	HPV116	HPV145
Discharge Rate (cc/rev) (排量)	116	145
Max. Pressure (kg/cm ²) (设定压力)	350	
Max. Speed (转速) (rpm)	2000	

SPLINE SPECIFICATION (花键参数)

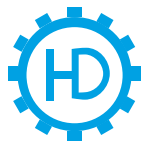
MODEL (型号)	No. of teeth (齿数)	Pitch circle dia(mm) (定位圆直径)	Module (模数)	Pressure angle (压力角)
HPV116	15	45	3.0	30°
HPV145				

SPECIFICATIONS FOR HPV116 & 145 (EX200/EX300-1/2/3, ZAXIS 300/330/350) (规格参数)

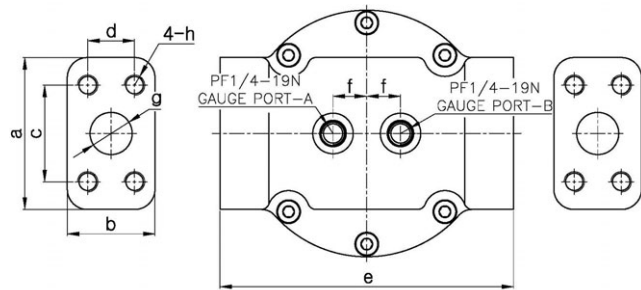
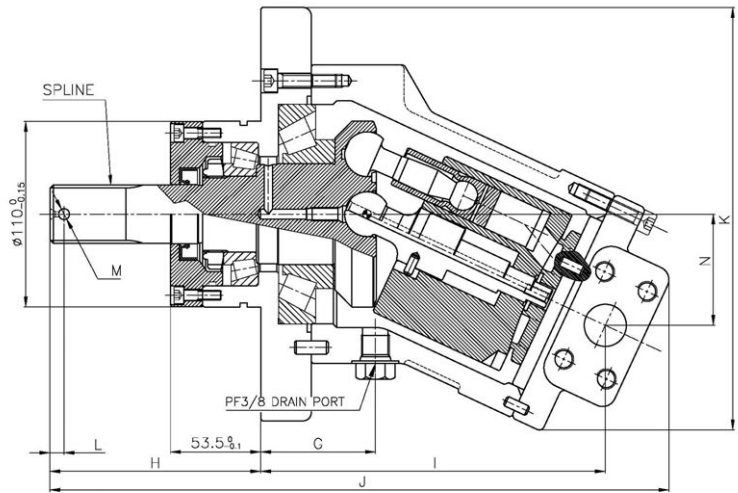
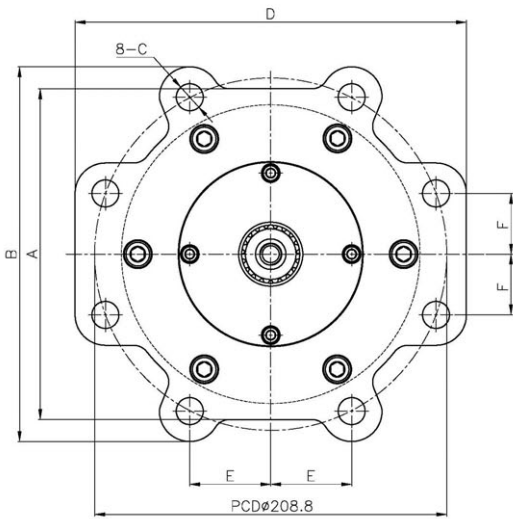
(mm)

MODEL (型号)	FLANGE MOUNTING FACE FOR DELIVERY & SUCTION PORTS (出/吸油口 规格参数)							
	A	B	C	D	E	F	G	H
HPV116	89	51	28	57	Ø65	Ø25	106.6	M12X1.75P TAP DP28
HPV145							114	

MODEL (型号)	J	K	L	M	N	P	Q	R	REMARK (备注)
HPV116	195.5	24	72.5	432	Ø160	Ø200.8	180	Ø17	
HPV145	208	21	74.4	458.5	Ø184	Ø220.6	200		



HBF90M-K BENT AXIS TYPE AXIAL PISTON MOTOR (HBF90M-K 弯轴式柱塞马达)



SPLINE&GEAR SPECIFICATION(花键参数)

MODEL (型号)	No. of teeth (齿数)	Pitch circle dia(mm) (定位圆直径)	Module (模数)	Pressure angle (压力角)
HBF90M (K-TYPE)	19	31.673	1.667	20°

FLANGE MOUNTING FACE FOR DELIVERY PORT (出/吸油口规格参数)

(mm)

MODEL (型号)	a	b	c	d	e	f	g	h
HBF90M (K-TYPE)	90	52	57.2	27.8	174	20	ø25	M12X1.75P Dp25

※ USABLE CIRCUMSTANCE (应用环境) 50°C, ISO VG46, -20~90°C

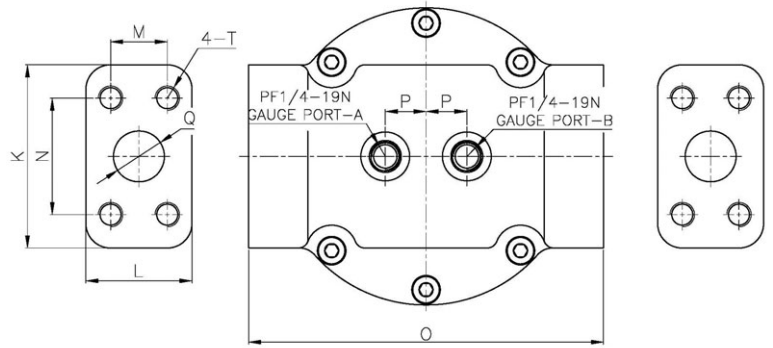
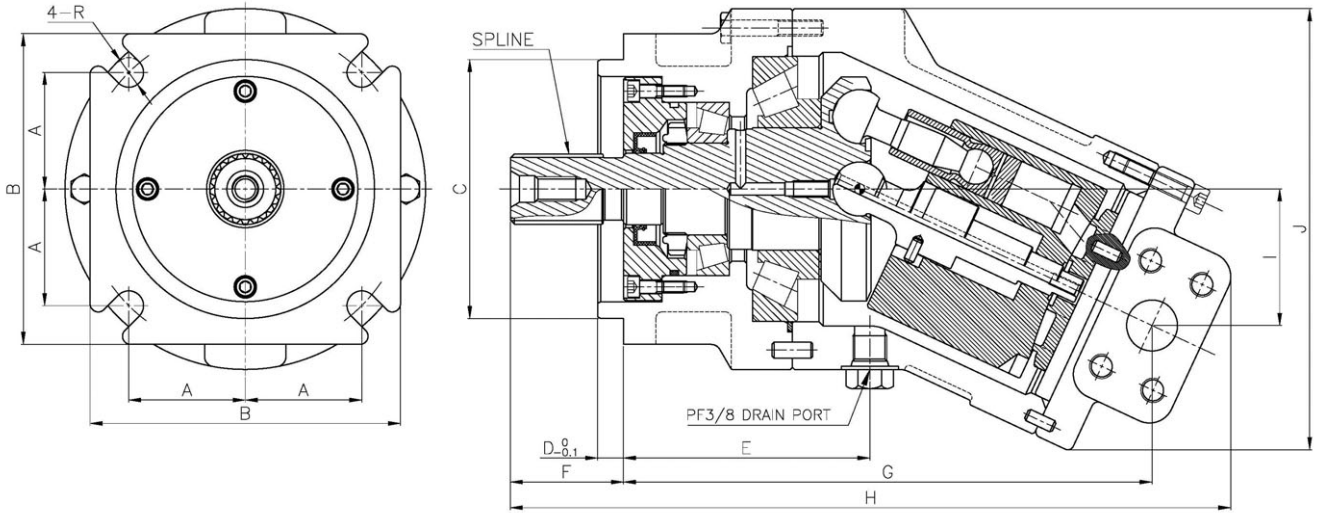
MODEL (型号)	DISPLACEMENT (cc/rev)	NORMAL PRESSURE (kg/cm ²)	TORQUE (Nm)	R.P.M	FLOW MAX L/min
HBF90M (K&S-TYPE)	90	350	492	3500	315

SPECIFICATIONS FOR HBF90M - K type (规格参数)

(mm)

MODEL (型号)	A	B	C	D	E	F	G	H	I	J	K	L	M	N
HBF90M (K-TYPE)	196	222	ø16	232	48	36	68	125	204	367	250.4	8.4	ø6.4	65.9

HBF90M-S BENT AXIS TYPE AXIAL PISTON MOTOR (HBF90M-S 弯轴式柱塞马达)



※ USABLE CIRCUMSTANCE (应用环境)
50°C, ISO VG46, -20~90°C

SPLINE&GEAR SPECIFICATION(花键参数)

MODEL (型号)	No. of teeth (齿数)	Pitch circle dia(mm) (定位圆直径)	Module (模数)	Pressure angle (压力角)
HBF50M	10	30	2.5	25°
HBF90M (S-TYPE)	21	33.337	16/32	30°

MODEL (型号)	DISPLACEMENT (cc / rev)	NORMAL PRESSURE (kg / cm ²)	TORQUE (Nm)	R.P.M	FLOW MAX L / min
HBF50M	50	350	374	4000	200
HBF90M (K&S-TYPE)	90	350	492	3500	315

SPECIFICATIONS FOR HBF90M - S TYPE (规格参数)

(mm)

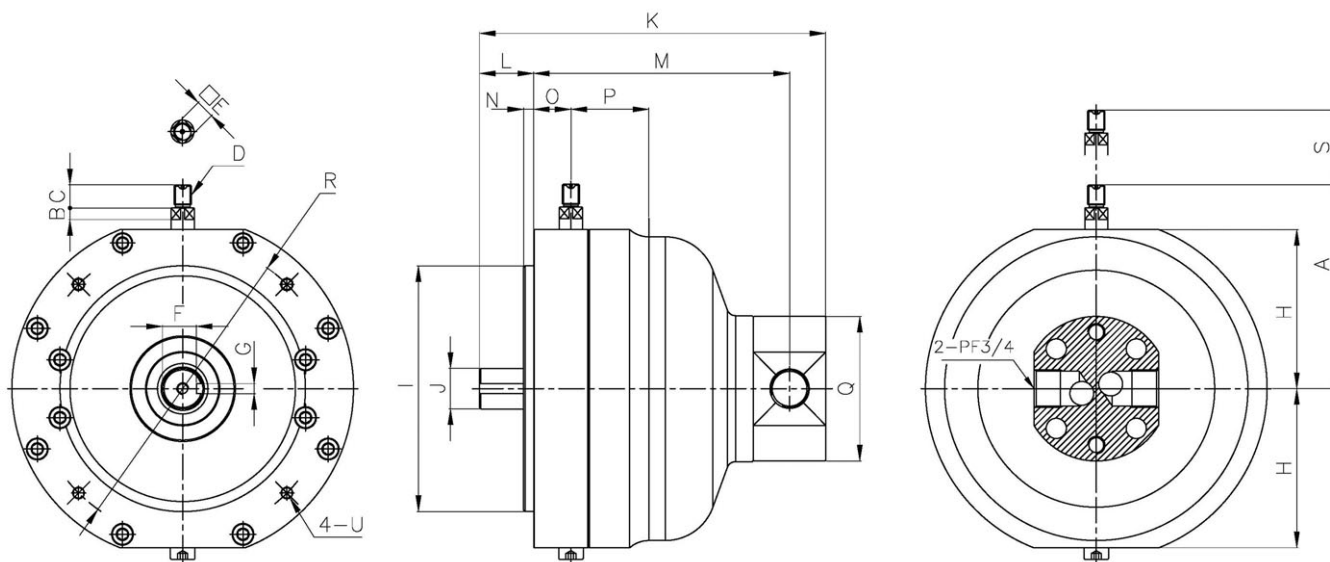
MODEL (型号)	A	B	C	D	E	F	G	H	I	J	K	L	M	N	O	P	Q	R	T
HBF50M	56.5	150	∅125	10	110	44.2	223	257	52.5	182	72.4	51	23.8	50.8	136	15	∅19	∅13.5	M10 ×1.5P DP17
HBF90M (S-TYPE)	57.2	152.4	∅127	12.7	121	55.2	260	354	65.8	216	90	52	27.8	52.7	174	20	∅25	∅14.5	M12 ×1.75P DP25



RV-716 RADIAL TYPE PISTON PUMP FOR MARINE (KAWASAKI)

※ USABLE CIRCUMSTANCE (应用环境)
50°C, ISO VG46, -20~90°C

MODEL (型号)	RV716
Discharge Rate (cc/rev) (排量)	20
Max. Pressure (kg/cm²) (设定压力)	150
Max. Speed (转速) (rpm)	1800

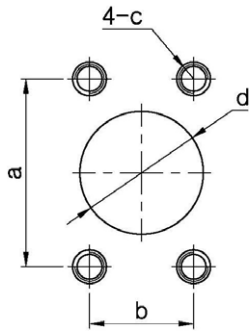
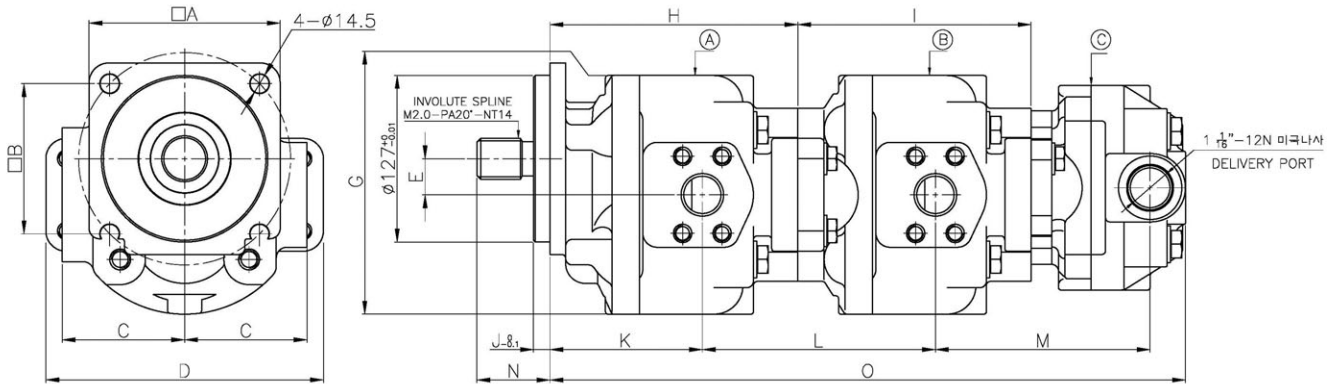


SPECIFICATIONS FOR RV-716 (规格参数)

(mm)

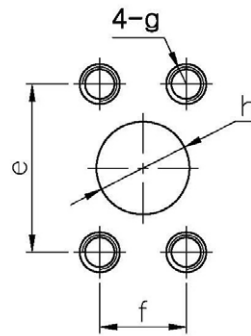
MODEL (型号)	A	B	C	D	E	F	G	H	I	J	K	L	M	N	O	P	Q	R	S	U
RV-716 (MARINE)	141	8	16	M12	13	23.5	7	110	∅170	∅28	239.7	37.5	177.2	7	25.8	53.9	∅100	∅204	ECCENTRIC MAX: 7mm	M18×1.25P Dp32

GPB 66-66-16.3(DH05W) GEAR PUMP FOR MAIN PUMP (齿轮泵)



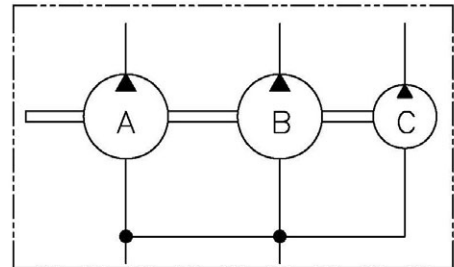
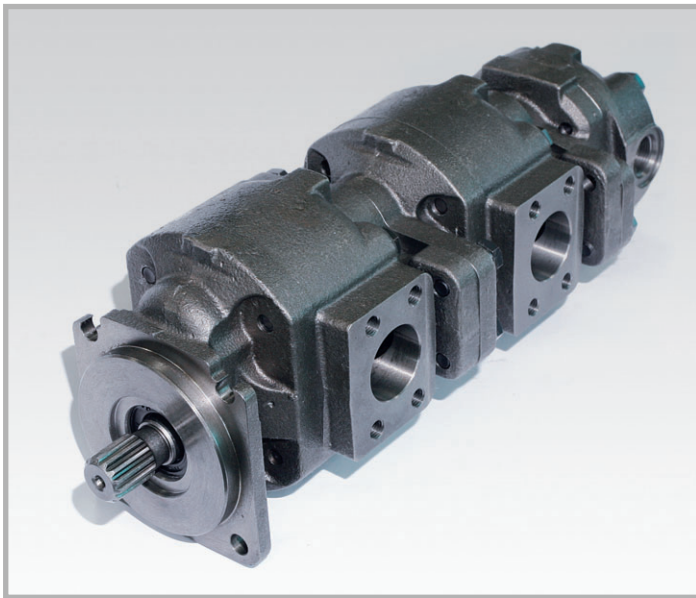
FLANGE MOUNTING FACE
FOR SUCTION PORT
(吸油口规格参数)

a	77.8
b	42.9
c	M14×2.0P Dp30
d	ø51



FLANGE MOUNTING FACE
FOR DELIVERY PORT
(出油口规格参数)

e	58.7
f	30.2
g	M12×1.75P Dp30
h	ø32.5



※USABLE CIRCUMSTANCE (应用环境)
50°C, ISO VG46, -20~90°C

MODEL (型号)	Ⓐ	Ⓑ	Ⓒ
Discharge Rate (cc/rev) (排量)	66		16.3
Max. Pressure (kg/cm ²) (设定压力)	175		
Max. Speed (转速) (rpm)	1632		

SPECIFICATIONS FOR GPS 66-66-16.3(DH05W) (规格参数)

(mm)

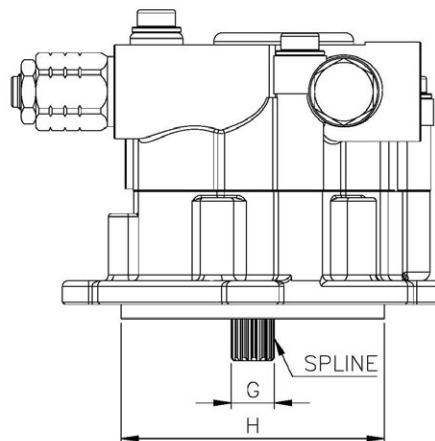
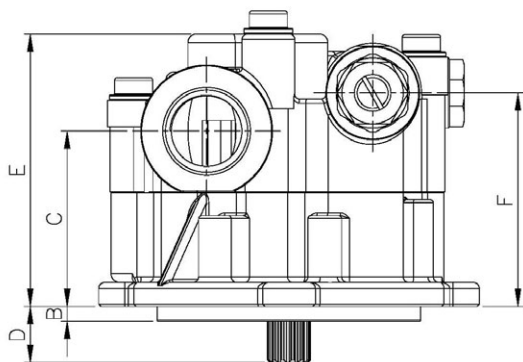
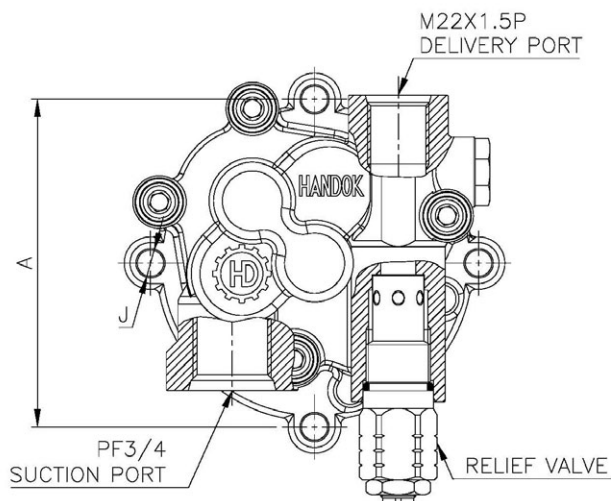
MODEL (型号)	A	B	C	D	E	G	H	I	J	K	L	M	N	O
GPB 66-66-16.3	146	114.5	93.5	212	27.5	182	189.4	178	127	116.4	178	164	55.8	485.4



GEAR PUMP FOR CHARGE AND PILOT (引导用齿轮泵/先导泵)

※USABLE CIRCUMSTANCE (应用环境)
50°C, ISO VG46, -20~90°C

MODEL (型号)	H3V63/80	H3V112	H3V140	H3V180
Discharge Rate (cc/rev) (排量)	12		15	
Relief Pressure (kg/cm ²) (设定压力)	50			
Max. Speed (转速) (rpm)	3250	2700	2500	2200



SPECIFICATIONS FOR H3V SERIES (规格参数)

(mm)

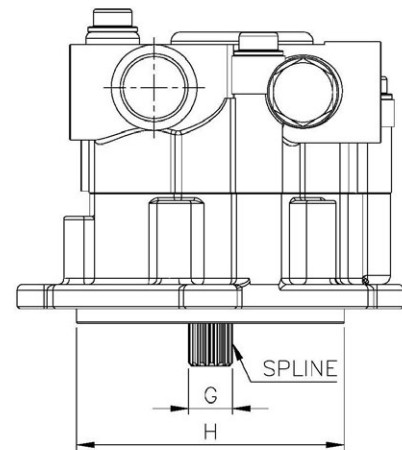
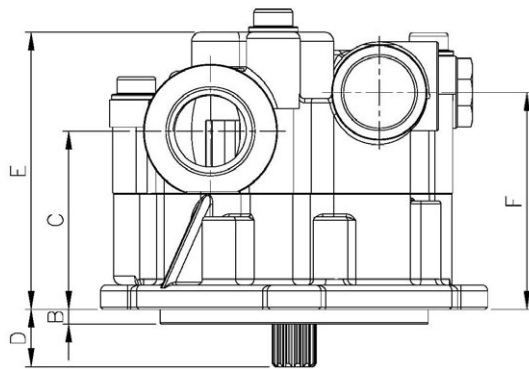
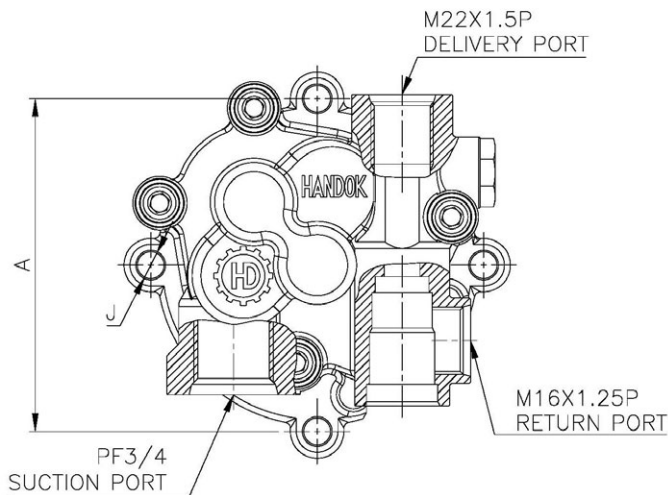
MODEL (型号)	A	B	C	D	E	F	G	H	J	SPLINE (花键)
H3V63/80	100	5	59.8	19.2	93	72.8	Ø14.8	Ø80	Ø6.6	Z 12 Z 13
H3V112	112									Z 12 Z 13
H3V140&180	138		62.8	16.2	96	75.8		Ø100	Ø17	Z 12 Z 13

GEAR PUMP FOR KOBELCO TYPE (KOBELCO/齿轮泵)



※USABLE CIRCUMSTANCE (应用环境)
50°C, ISO VG46, -20~90°C

MODEL (型号)	H3V63/80	H3V112	H3V140	H3V180
Discharge Rate (cc/rev) (排量)	12		15	
Relief Pressure (kg/cm ²) (设定压力)	50			
Max. Speed (转速) (rpm)	3250	2700	2500	2200



SPECIFICATIONS FOR H3V SERIES OF KOBELCO TYPE (规格参数) (mm)

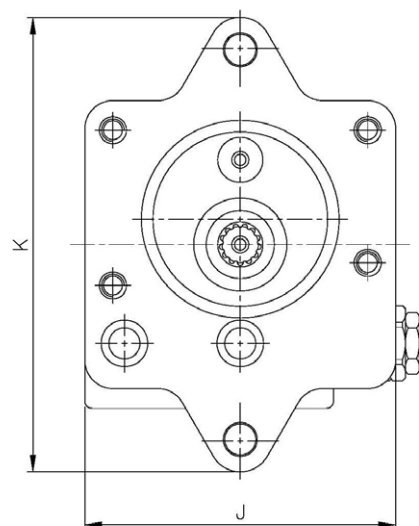
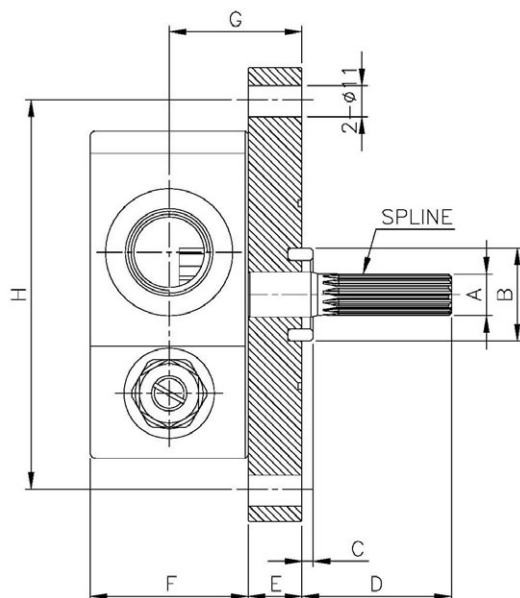
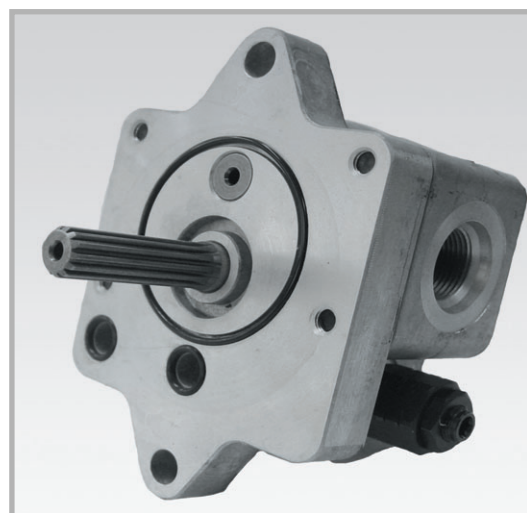
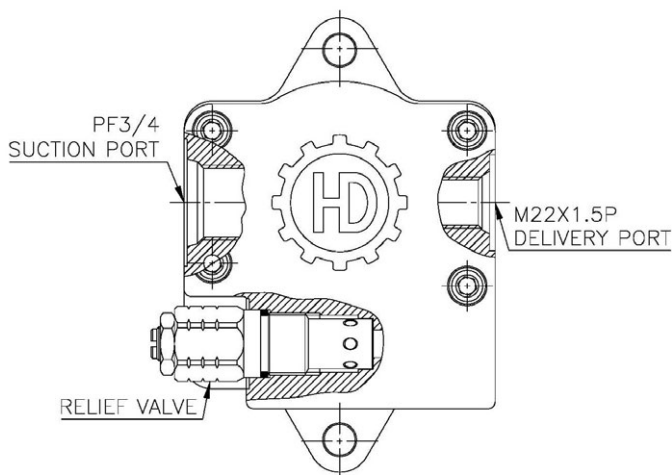
MODEL (型号)	A	B	C	D	E	F	G	H	J	SPLINE (花键)
H3V63/80	100	5	59.8	19.2	93	72.8	ø14.8	ø80	ø6.6	Z 12 Z 13
H3V112	112							ø90	ø9	Z 12 Z 13
H3V140&180	138		62.8	16.2	96	75.8		ø100	ø17	Z 12 Z 13



GEAR PUMP FOR CHARGE AND PILOT (引导用齿轮泵)

※USABLE CIRCUMSTANCE (应用环境)
50°C, ISO VG46, -20~90°C

MODEL (型号)	NV45/50/64	NV90/111	NV120/137	NV172
Discharge Rate (cc/rev) (排量)	12		15	
Relief Pressure (kg/cm ²) (设定压力)	50			
Max. Speed (转速) (rpm)	3250	2700	2500	2200



SPECIFICATIONS FOR NV SERIES (OLD STYLE-A) (旧版A) (规格参数) (mm)

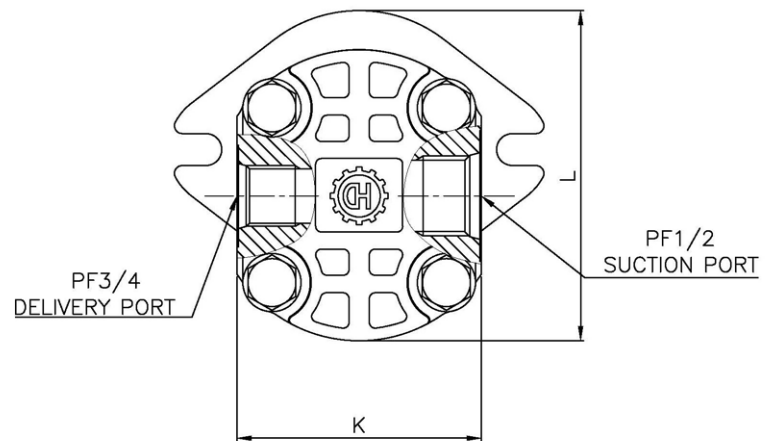
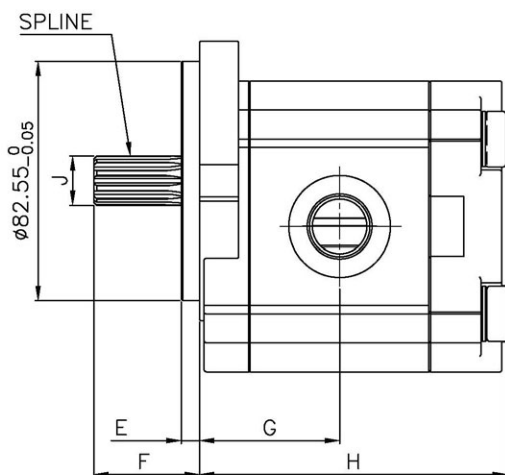
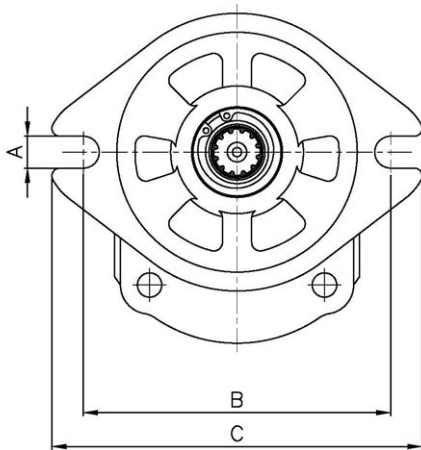
MODEL (型号)	A	B	C	D	E	F	G	H	J	K	SPLINE (花键)
NV SERIES	∅14.8	∅33	4.0	53	19	56	39.8	139	120.8	160.5	Z 13

GEAR PUMP FOR HITACHI EXCAVATOR (HITACHI/日立挖土机用齿轮泵)



※ USABLE CIRCUMSTANCE (应用环境)
50℃, ISO VG46, -20~90℃

MODEL (型号)	HPV050	HPV0102	HPV091ES	HPV091EW	HPV116	HPV145	A7VO250
Discharge Rate (cc/rev) (排量)	16.8						
Max. Pressure (kg/cm ²) (设定压力)	210						
Max. Speed (转速) (rpm)	3200						
DIRECTION (方向)	CW(L)	CW(L)	CW(L)	CW(L)	CW(R)	CW(R)	CW(R)



SPECIFICATIONS FOR HPV116/145, HPV050/102/105/91EW, A7VO250 (规格参数) (mm)

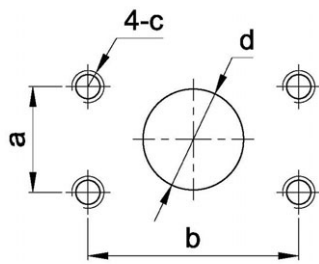
MODEL (型号)	A	B	C	E	F	G	H	J	K	L	SPLINE (花键)
HITACHI PARTS	11	106	124.6	6.2	41.1	47.6	109	∅17	84	113.7	Z10



GEAR PUMP FOR HPV125A/B, KVC925 EXCAVATOR (HPV125A/B, KVC925/ 挖土机用齿轮泵)

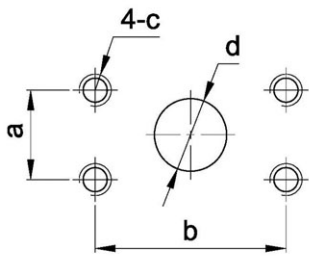
※USABLE CIRCUMSTANCE (应用环境)
50°C, ISO VG46, -20~90°C

MODEL (型号)	HPV125A	HPV125B	KVC925
Discharge Rate (cc/rev) (排量)		16.8	
Relief Pressure (kg/cm ²) (设定压力)		210	
Max. Speed (转速) (rpm)		3200	
DIRECTION (方向)		CCW(L)	



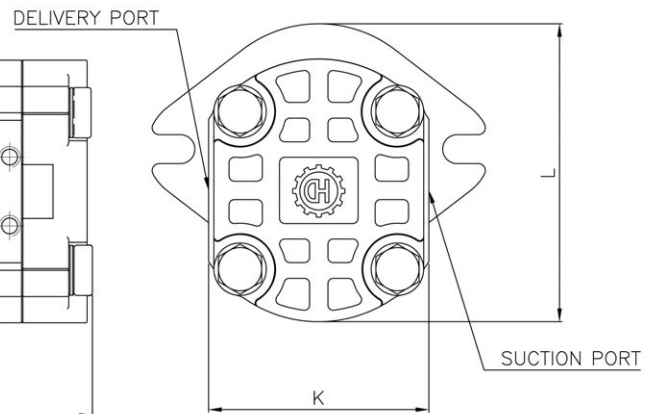
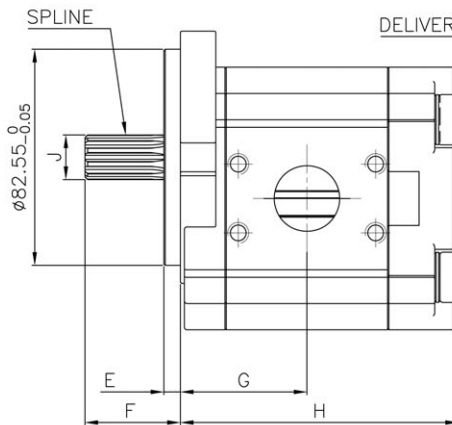
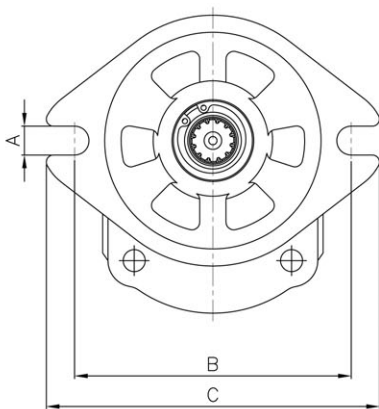
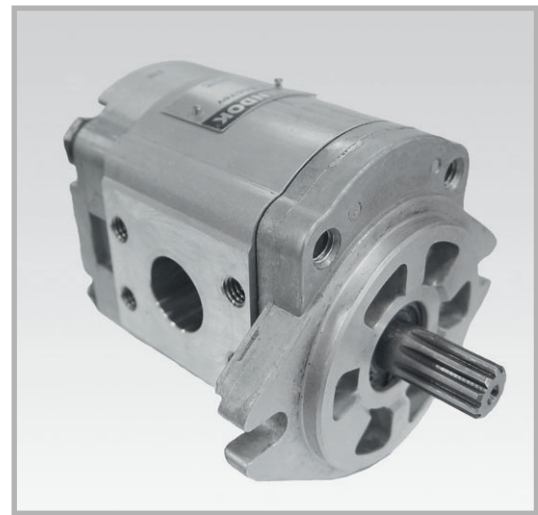
FLANGEMOUNTING FACE
FOR DELIVERY PORT
(出油口规格参数)

a	26.2
b	52.4
c	38-16UNC
d	∅25



FLANGEMOUNTING FACE
FOR DELIVERY PORT
(出油口规格参数)

a	22.2
b	47.6
c	38-16UNC
d	∅18



SPECIFICATIONS FOR HPV125A/B, KVC925 (规格参数)

(mm)

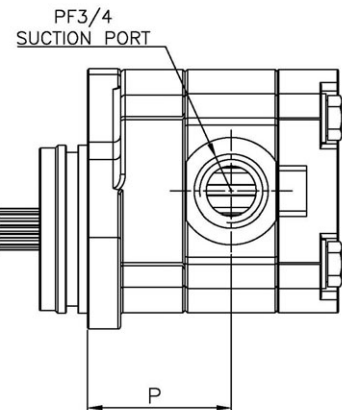
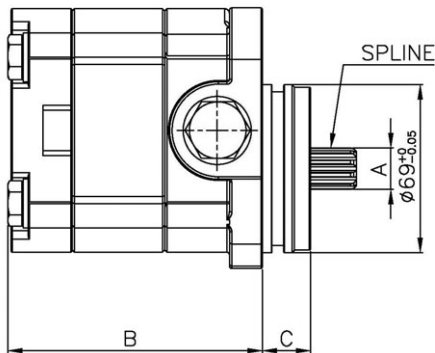
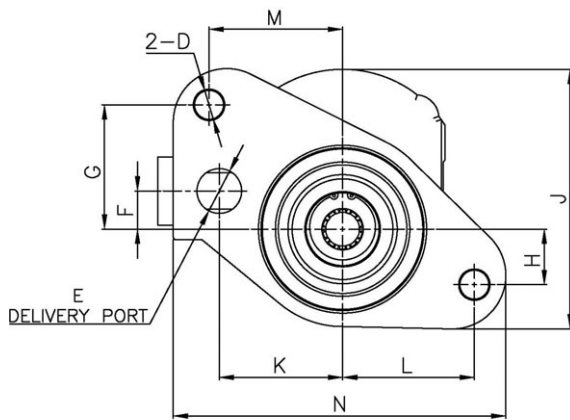
MODEL (型号)	A	B	C	E	F	G	H	J	K	L	SPLINE (花键)
HITACHI PARTS	11	106	124.6	6.2	41.1	47.6	109	∅17	84	113.5	Z 10

GEAR PUMP FOR HITACHI EXCAVATOR (HITACHI/日立挖土机用齿轮泵)



※USABLE CIRCUMSTANCE (应用环境)
50℃, ISO VG46, -20~90℃

MODEL (型号)	HPVO91DW	HPVO91DS
Discharge Rate (cc/rev) (排量)	16.8	
Max. Pressure (kg/cm ²) (设定压力)	210	
Max. Speed (转速) (rpm)	3200	
DIRECTION (方向)	CW(R)	



SPECIFICATIONS FOR HPVO91DS/DW (规格参数)

(mm)

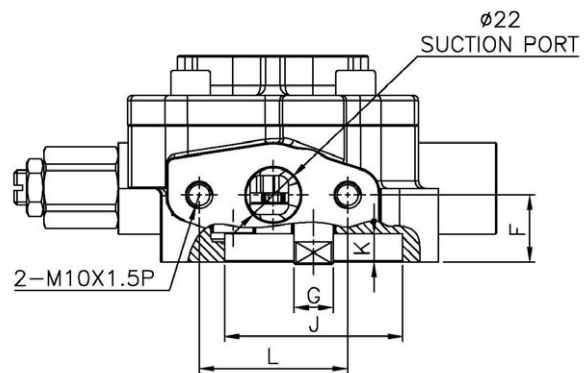
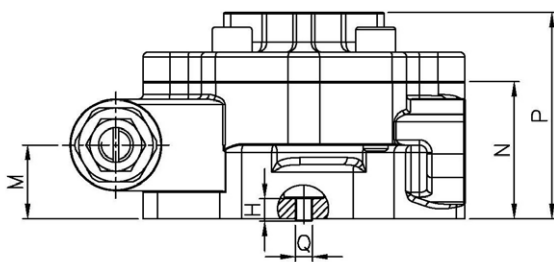
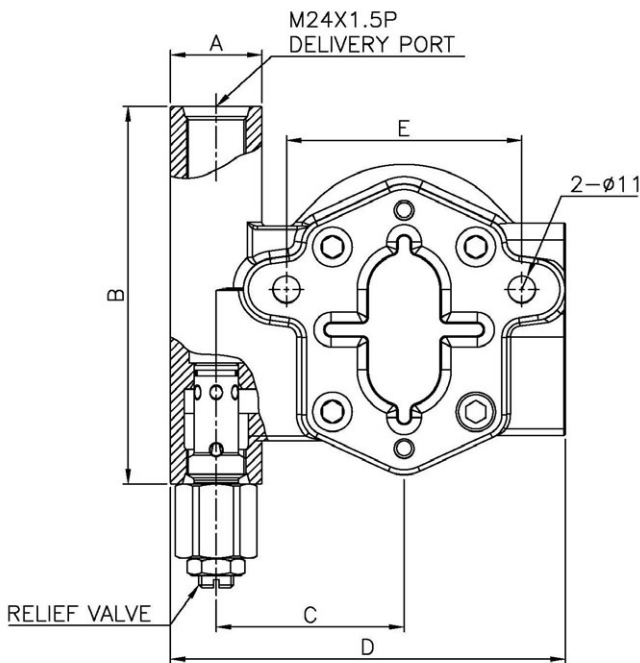
MODEL (型号)	A	B	C	D	E	F	G	H	J	K	L	M	N	P	SPLINE-A (花键)
EX100-2 &EX120-2 &EX200-2	∅17	115.4	19.8	∅12	∅18.4	15.7	51	228	106.7	50.6	54	54.8	136.5	59	Z 10



GEAR PUMP FOR KOMATSU EXCAVATOR (KOMATSU/小松挖土机用齿轮泵)

※USABLE CIRCUMSTANCE (应用环境)
50°C, ISO VG46, -20~90°C

MODEL (型号)	HPV55	HPV35&95	HPV132
Discharge Rate (cc/rev) (排量)	17.6	13.2	17.6
Relief Pressure (kg/cm ²) (设定压力)	50		
Max. Speed (转速) (rpm)	3200		



SPECIFICATIONS FOR HPV35/55/95/132
(PC60-3/5, PC100/120-3/5, PC200&220-6/7, PC300-6) (规格参数)

(mm)

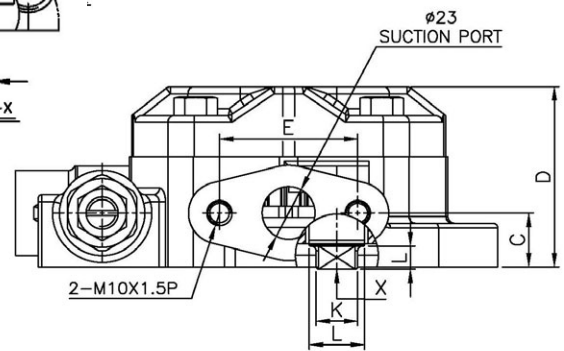
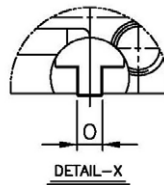
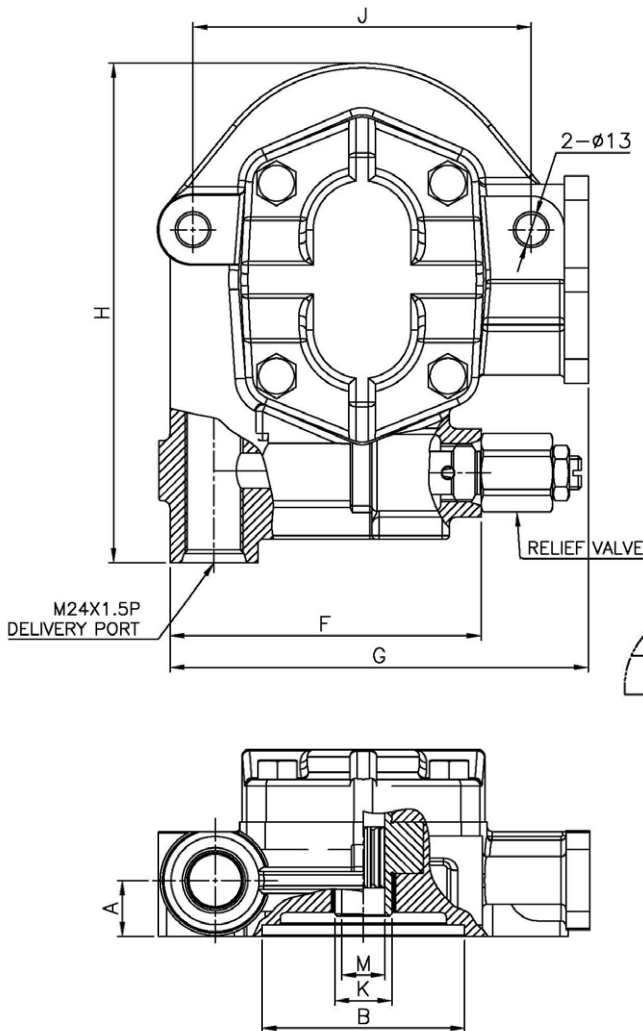
MODEL (型号)	A	B	C	D	E	F	G	H	J	K	L	M	N	P	Q	REMARK (备注)
HPV55 (PC100/120-3/5)					95.2	27.2			Ø72	11.5		29.9	55.5	83.5		
HPV35 & HPV95 (PC60-3/5, PC200&220-6/7)	Ø37	153	76	159.7	105	26.3	Ø16	9.2			60	28.9	48.9	75.4	7	
HPV132 (PC300-6)						27.2			Ø64	8.2		29.9	55.5	83.5		

GEAR PUMP FOR KOMATSU EXCAVATOR (KOMATSU/小松挖土机用齿轮泵)



※USABLE CIRCUMSTANCE (应用环境)
50°C, ISO VG46, -20~90°C

MODEL (型号)	HPV71	HPV90
Discharge Rate (cc/rev) (排量)	23.5	
Relief Pressure (kg/cm ²) (设定压力)	50	
Max. Speed (转速) (rpm)	3200	



SPECIFICATIONS FOR HPV71/90 (PC150-3/5, PC200-3/5, PC220-3/5) (规格参数) (mm)

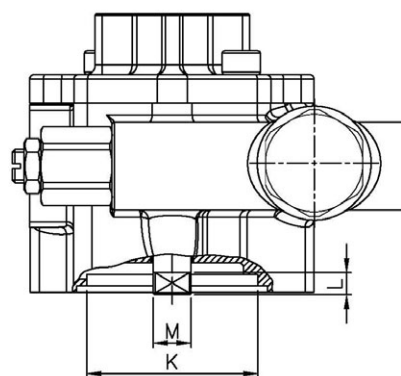
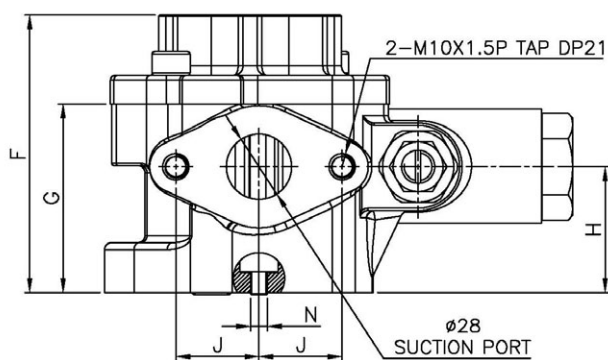
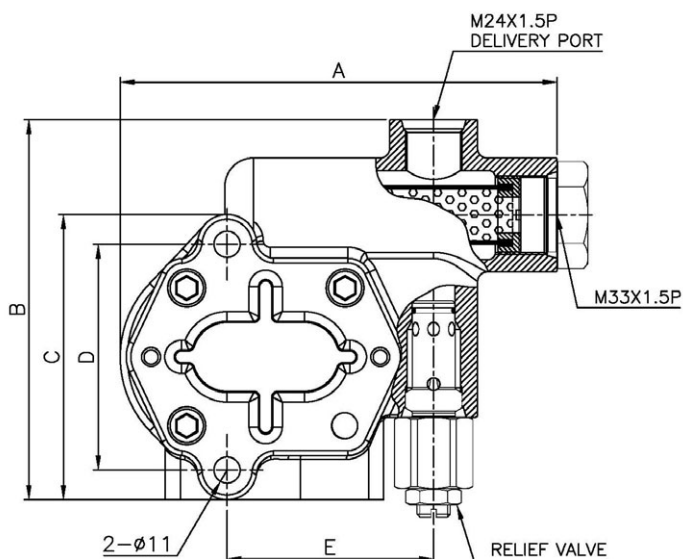
MODEL (型号)	A	B	C	D	E	F	G	H	J	K	L	M	O	SPLINE (花键)
HPV71 (PC150-3/5)	26.5	∅85	26.5	78.5	60	130.7	175.7	210	142	∅24	-	∅18.2	-	Z 10
HPV90 (PC200-3/5)											10	-	9	-



GEAR PUMP FOR KOMATSU EXCAVATOR (KOMATSU/小松挖土机用齿轮泵)

※USABLE CIRCUMSTANCE (应用环境)
50°C, ISO VG46, -20~90°C

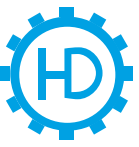
MODEL (型号)	HPV160
Discharge Rate (cc/rev) (排量)	28.6
Relief Pressure (kg/cm²) (设定压力)	50
Max. Speed (转速) (rpm)	3200



SPECIFICATIONS FOR HPV160 (PC300-3/5, PC400-3/5) (规格参数) (mm)

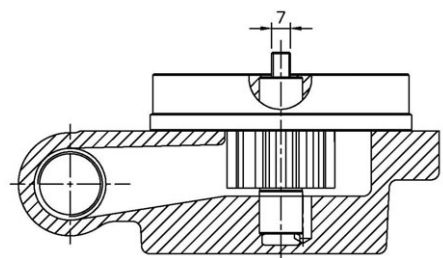
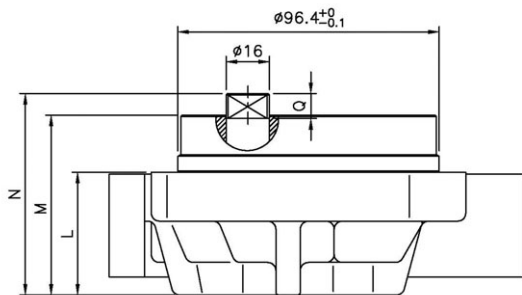
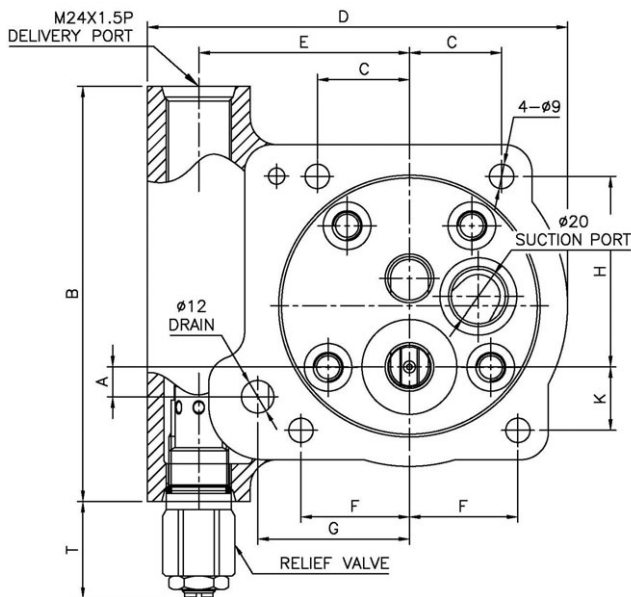
MODEL (型号)	A	B	C	D	E	F	G	H	J	K	L	M	N	REMARK (备注)
HPV160 (PC300-3/5, /400-3/5)	184	160	120	95	87	117	79.5	53	35	Ø72	9.4	Ø16	7	

GEAR PUMP FOR KOMATSU EXCAVATOR (KOMATSU/小松挖土机用齿轮泵)



※USABLE CIRCUMSTANCE (应用环境)
50°C, ISO VG46, -20~90°C

MODEL (型号)	HPV75
Discharge Rate (cc/rev) (排量)	16.8
Relief Pressure (kg/cm²) (设定压力)	50
Max. Speed (转速) (rpm)	3200



● SPECIFICATIONS FOR HPV75(PC60-7) (规格参数)

(mm)

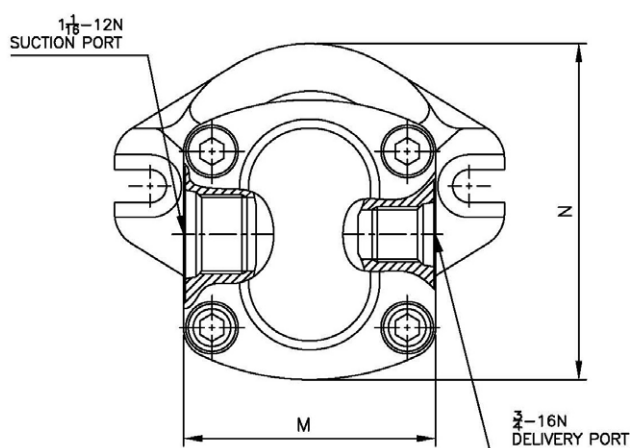
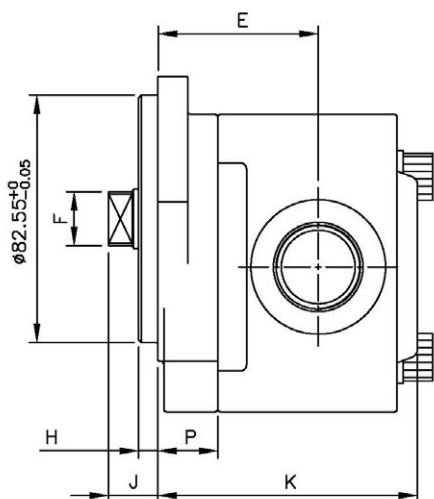
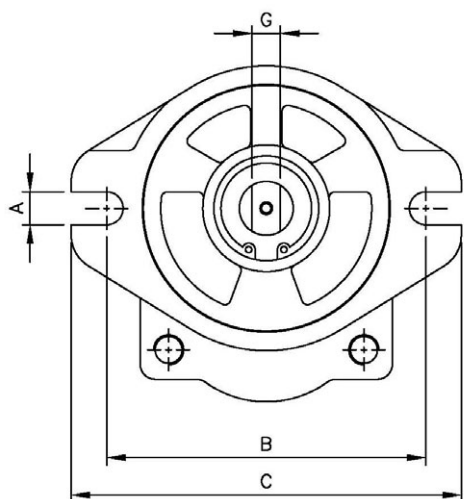
MODEL (型号)	A	B	C	D	E	F	G	H	K	L	M	N	Q	T
HPV75 (PC60-7)	11	153	34	155	77.7	40	56	70.1	23.4	45.2	66.2	74.2	9.2	42



GEAR PUMP FOR SBS120/140 EXCAVATOR (三菱/卡特比勒挖土机用齿轮泵)

※ USABLE CIRCUMSTANCE (应用环境)
50°C, ISO VG46, -20~90°C

MODEL (型号)	SBS120	SBS140
Discharge Rate (cc/rev) (排量)	20	
Max. Pressure (kg/cm ²) (设定压力)	210	
Max. Speed (转速) (rpm)	3200	
DIRECTION (方向)	CW(R)	



SPECIFICATIONS FOR SBS120/140(CAT320C/322C/325C) (规格参数) (mm)

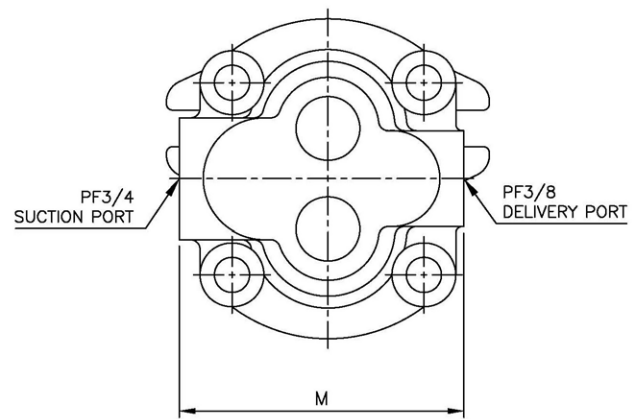
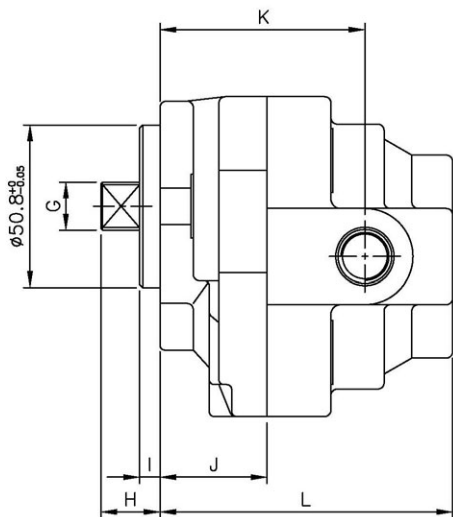
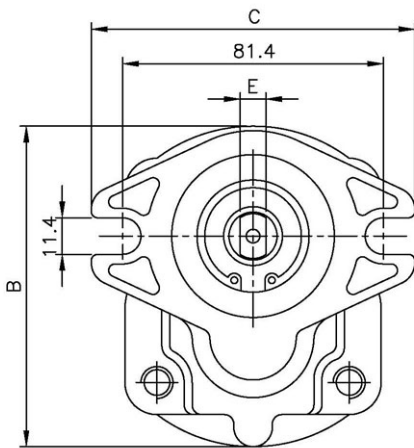
MODEL (型号)	A	B	C	E	F	G	H	J	K	M	N	P
CATER PILLAR	11	105.7	130.4	53.2	∅19	8	6.5	22.3	84.4	79	110.4	23.1

GEAR PUMP FOR MITSUBISHI AND CATERPILLAR EXCAVATOR(三菱/卡特比勒挖土机用齿轮泵)



※USABLE CIRCUMSTANCE (应用环境)
50℃, ISO VG46, -20~90℃

MODEL (型号)	SPK10-10	AP12	K3V63(CAT)
Discharge Rate (cc/rev) (排量)	11		
Max. Pressure (kg/cm²) (设定压力)	210		
Max. Speed (转速) (rpm)	3200		
DIRECTION (方向)	CW(R)		



SPECIFICATIONS FOR SPK10-10/AP12 SERIES MITSUBISHI AND CATERPILLAR (E180/E200B/E320B/E315/K3V63(CAT)) (规格参数)

(mm)

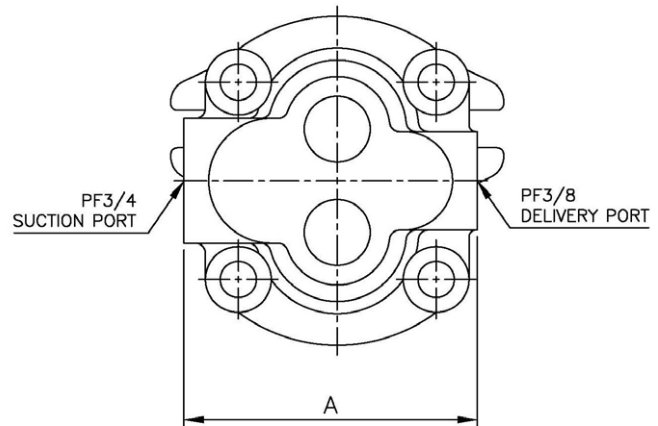
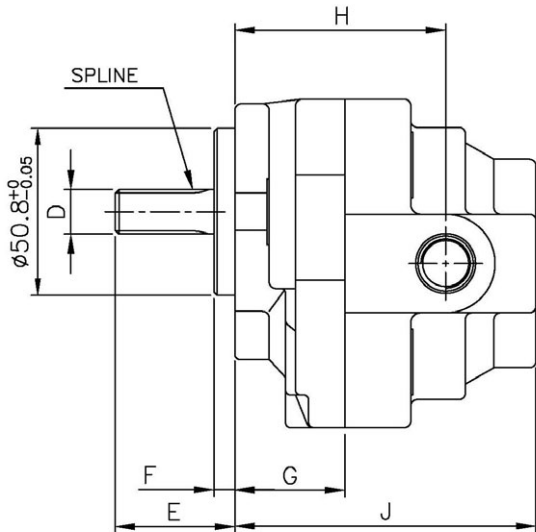
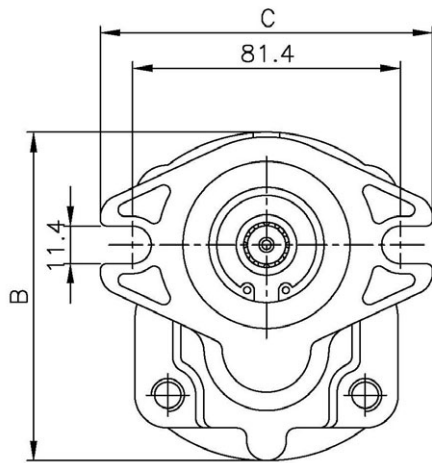
MODEL (型号)	B	C	E	G	H	I	J	K	L	M
SPK10-10 & AP12	100	101	8	∅15	18	6.4	33.4	64	91.4	89



GEAR PUMP FOR KOBELCO EXCAVATOR (KOBELCO/齿轮泵)

※USABLE CIRCUMSTANCE (应用环境)
50°C, ISO VG46, -20~90°C

MODEL (型号)	K3V63/NV64	K3V112/NV90/111	K3V140/180/NV137/172
Discharge Rate (cc/rev) (排量)	12		15
Max. Pressure (kg/cm²) (设定压力)	50		
Max. Speed (转速) (rpm)	3250	2700	2500
DIRECTION (方向)	CW(R)		



SPECIFICATIONS FOR K3V/K3VBDT/NV SERIES

(K904/905/907/909, SK100/120/150/200/220/240/300/400) (规格参数)

(mm)

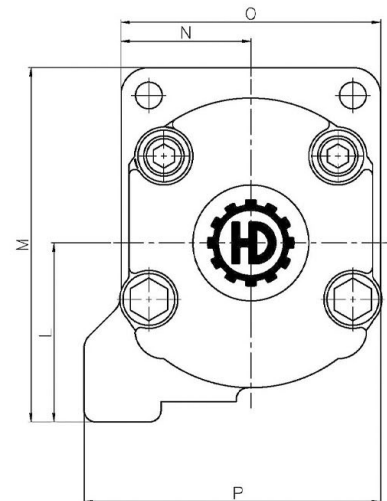
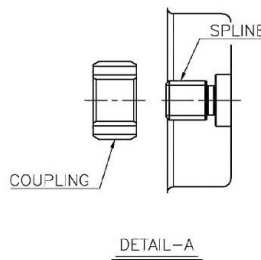
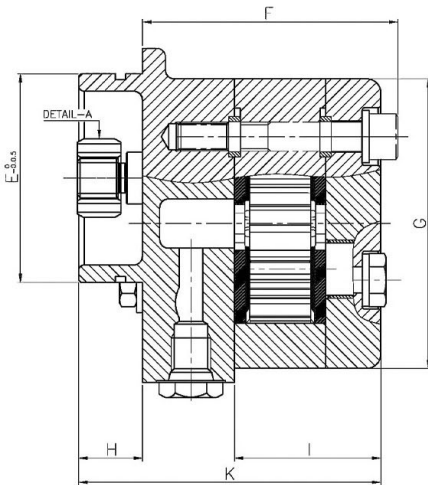
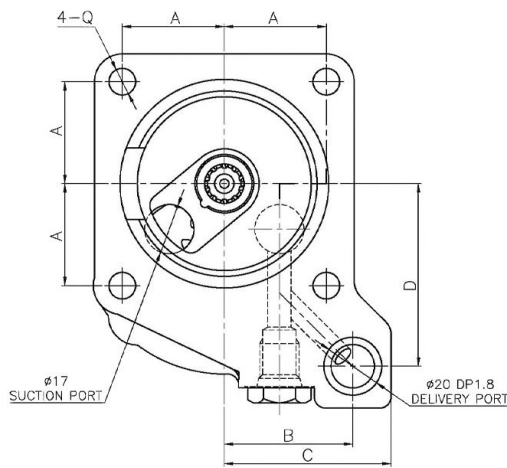
MODEL (型号)	A	B	C	D	E	F	G	H	J	SPLINE
K3V NV SERIES	89	100	101	13.5	38.3	6.4	33.4	64	91.4	Z12

GEAR PUMP FOR REXROTH A8VO SERIES CHARGE AND PILOT (引导用齿轮泵)



※USABLE CIRCUMSTANCE (应用环境)
50°C, ISO VG46, -20~90°C

MODEL (型号)	A8VO55	A8VO80	A8VO107	A8VO160
Discharge Rate (cc/rev) (排量)	8		12	16.6
Max. Pressure (kg/cm ²) (设定压力)	210			
Max. Speed (转速) (rpm)	2500			
DIRECTION (方向)	CCW(L)			



SPECIFICATIONS FOR A8VO80&O107(CAT300/300LC) (规格参数)

(mm)

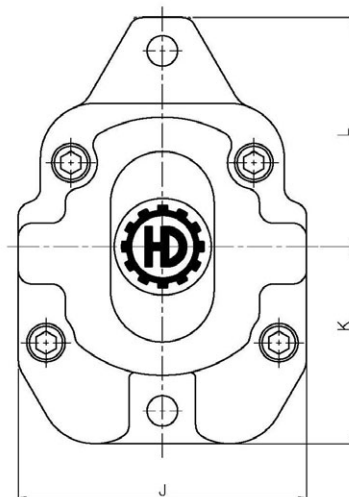
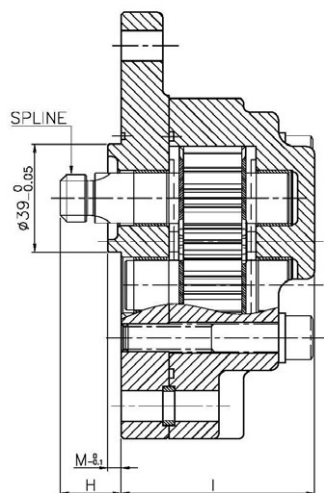
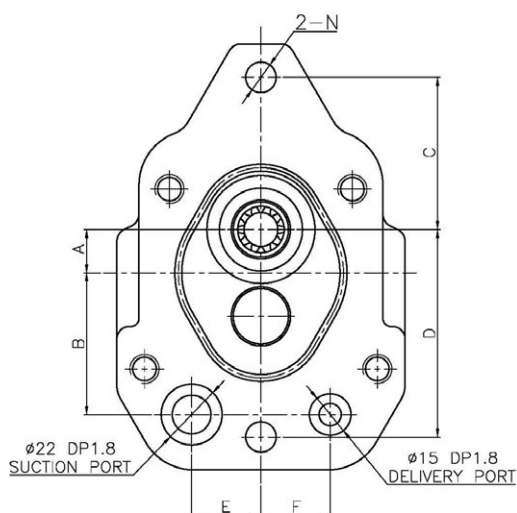
MODEL (型号)	A	B	C	D	E	F	G	H	I	K	L	M	N	O	P	Q	SPLINE (花键)
A8VO80	35.5	31.3	45.3	59.2	ø62	76.3	101.7	21	48.5	91.5	57	118.5	44	88	-	ø9.5	Z13
A8VO107	35.2	44.3	57.5	63	ø72	88.2	100	22	50.5	104.3	61.8	115.3	44.8	89.6	102.3	ø9.2	Z10



GEAR PUMP FOR UCHIDA A8V SERIES CHARGE AND PILOT (引导用齿轮泵)

※USABLE CIRCUMSTANCE (应用环境)
50°C, ISO VG46, -20~90°C

MODEL (型号)	A8V55/59/80/86/107/115	A8V172
Discharge Rate (cc/rev) (排量)	12	16.6
Max. Pressure (kg/cm²) (设定压力)	210	
Max. Speed (转速) (rpm)	2500	
DIRECTION (方向)	CCW(L)	

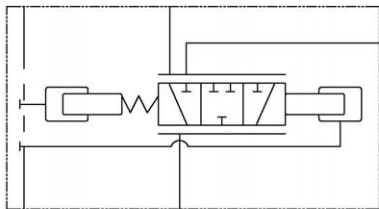
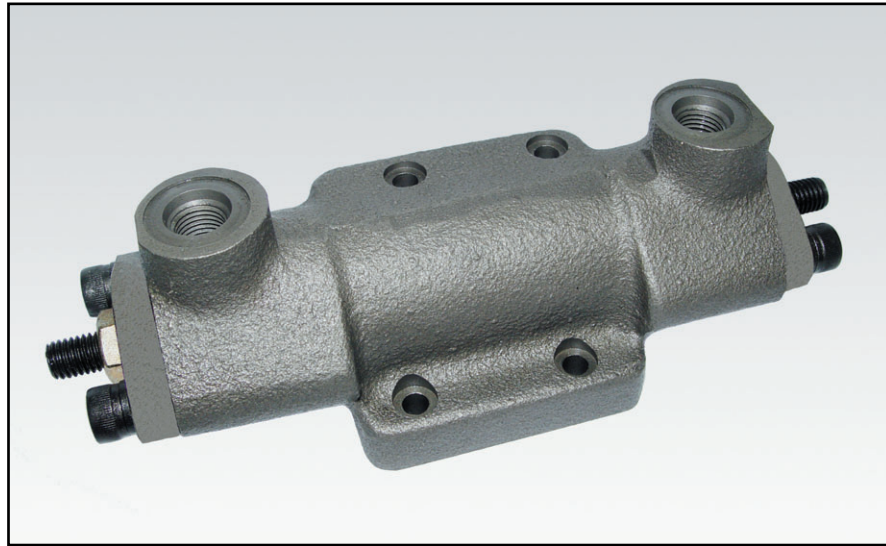


SPECIFICATIONS FOR A8V55/59/80/86/107/115 (规格参数)

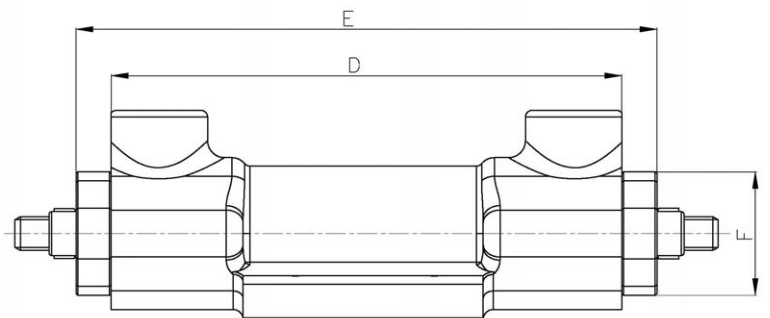
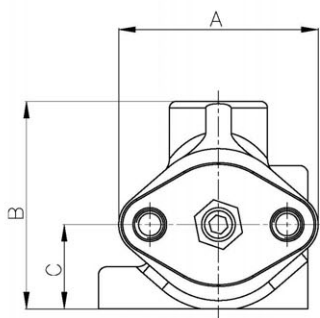
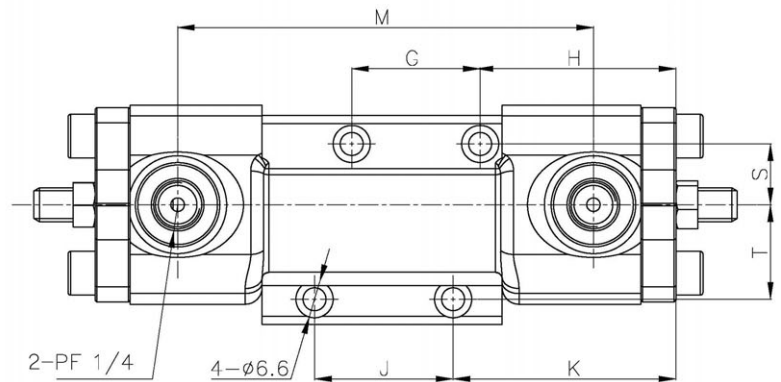
(mm)

MODEL (型号)	A	B	C	D	E	F	H	I	J	K	L	M	N	SPLINE (花键)
A8V SERIES	15.7	51.2	55	75	25	25	21.9	69.7	104	86.9	67.1	4.8	ø 11	Z10

LOAD SENSING VALVE (H3V SERIES)

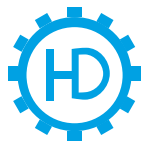


HYDRUALIC CIRCUIT

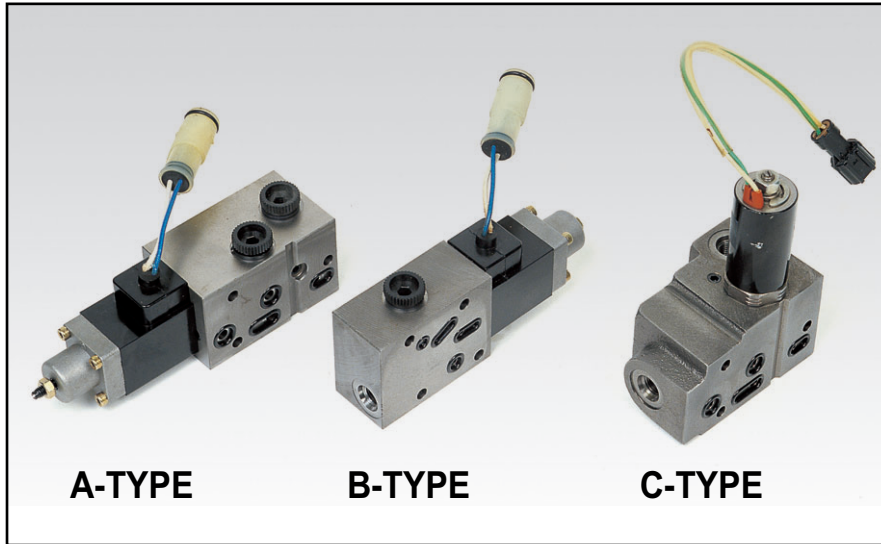


SPECIFICATIONS FOR LOAD SENSING VALVE (H3V SERIES) (规格参数) (mm)

MODEL (型号)	A	B	C	D	E	F	G	H	J	K	M	S	T	REMARK (备注)
H3V SERIES	59	61.5	25	151	178.1	36.6	38	57.9	41	65.9	123	18	28	



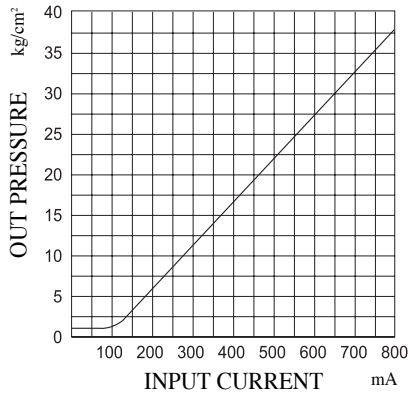
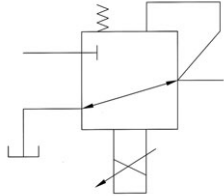
(E.P.R 阀列系) E.P.R VALVE SERIES (电磁阀) PROPORTIONAL VALVES



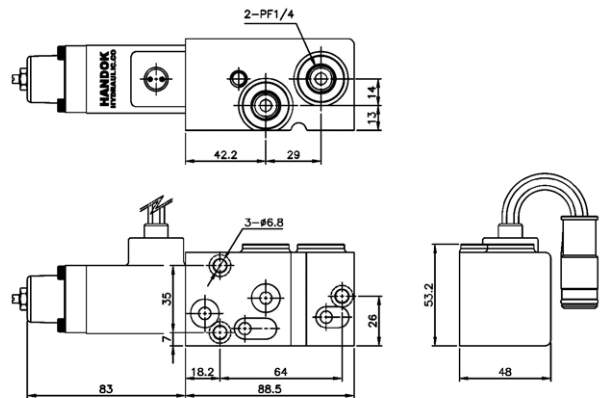
A-TYPE

B-TYPE

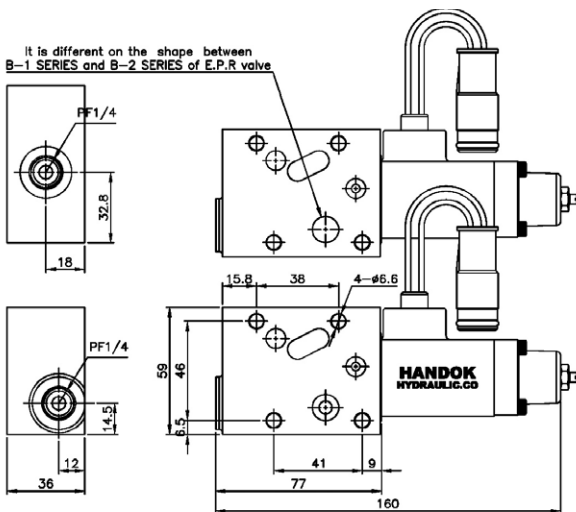
C-TYPE



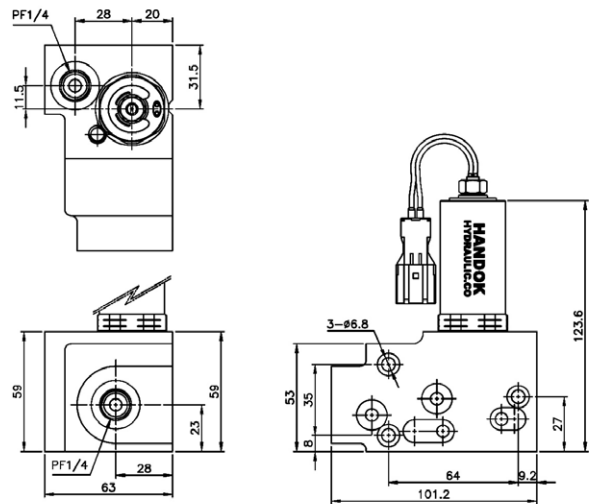
PERFORMANCE (TEST) REPORT
(性能(测试)报告) 输出压力-输入电流



A-TYPE
(A系列)

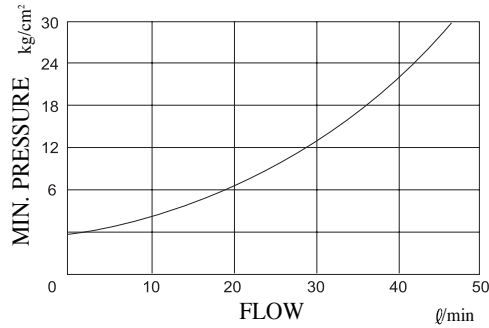
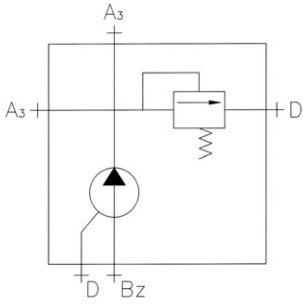


B-TYPE
(B系列)



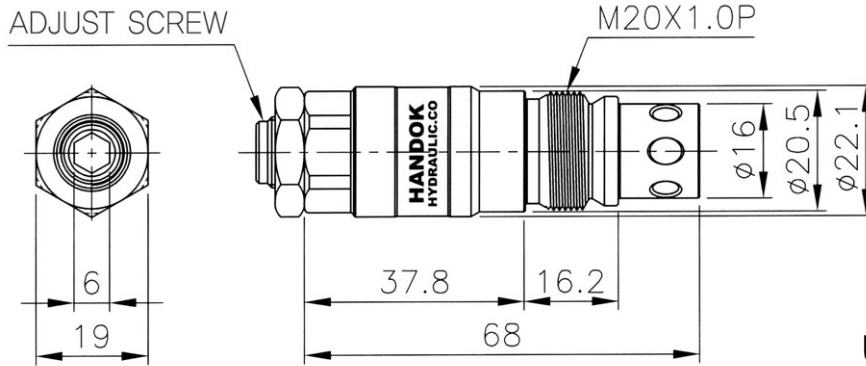
C-TYPE
(C系列)

RELIEF VALVE SERIES (减压阀系列)



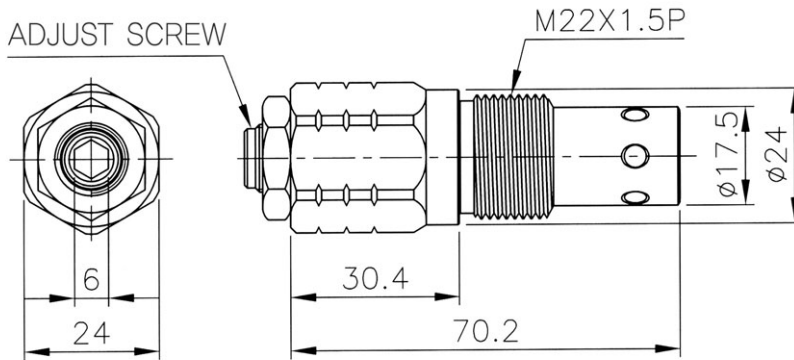
PERFORMANCE (Pmin-Q)

(性能)最小压力-流量



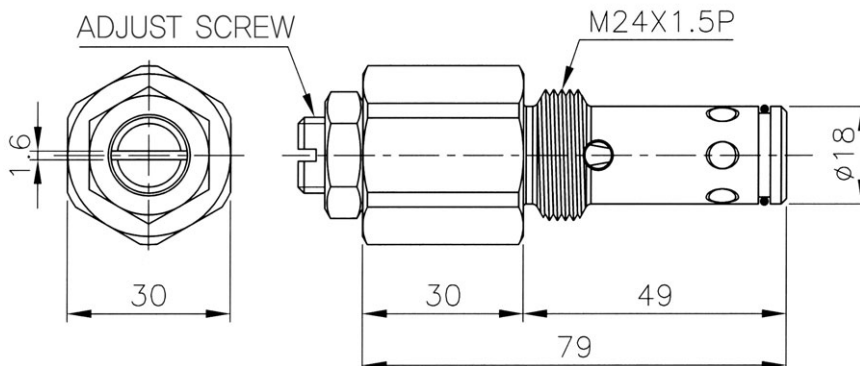
UCHIDA SERIES

(内田系列)



KAWASAKI SERIES

(川崎系列)



KOMATSU SERIES

(小松系列)